

SHORT REPORT

Open Access

Analysis of *BRCA1* and *BRCA2* large genomic rearrangements in Sri Lankan familial breast cancer patients and at risk individuals

Sumadee De Silva¹, Kamani Hemamala Tennekoon^{1*}, Eric Hamilton Karunanayake¹, Indrani Amarasinghe² and Preethika Angunawela³

Abstract

Background: Majority of mutations found to date in the *BRCA1/BRCA2* genes in breast and/or ovarian cancer families are point mutations or small insertions and deletions scattered over the coding sequence and splice junctions. Such mutations and sequence variants of *BRCA1* and *BRCA2* genes were previously identified in a group of Sri Lankan breast cancer patients. Large genomic rearrangements have been characterized in *BRCA1* and *BRCA2* genes in several populations but these have not been characterized in Sri Lankan breast cancer patients.

Findings: A cohort of familial breast cancer patients (N = 57), at risk individuals (N = 25) and healthy controls (N = 23) were analyzed using multiplex ligation-dependent probe amplification method to detect *BRCA1* and *BRCA2* large genomic rearrangements. One familial breast cancer patient showed an ambiguous deletion in exon 6 of *BRCA1* gene. Full sequencing of the ambiguous region was used to confirm MLPA results. Ambiguous deletion detected by MLPA was found to be a false positive result confirming that *BRCA1* large genomic rearrangements were absent in the subjects studied. No *BRCA2* rearrangement was also identified in the cohort.

Conclusion: Thus this study demonstrates that *BRCA1* and *BRCA2* large genomic rearrangements are unlikely to make a significant contribution to aetiology of breast cancer in Sri Lanka.

Keywords: *BRCA1*, *BRCA2*, Large genomic rearrangements, Breast cancer

Findings

Background

Germ-line mutations in *BRCA1* and *BRCA2* tumor suppressor genes cause a hereditary predisposition to breast and ovarian cancer [1]. Such mutations account for 15-20% of familial breast cancer [2]. Although familial breast cancer contributes to 5-10% of all breast cancers, individuals carrying mutations in one of these genes have a 40-80% chance of developing breast cancer [3]. At present, in Sri Lanka women are diagnosed with breast cancer at a median age of 50 years contributing to approximately 25% of all cancers [4]. Majority of mutations found to date in the *BRCA1* and *BRCA2* genes in breast and/or ovarian cancer families are point mutations or small insertions

and deletions scattered over the whole coding sequence and the splice junctions. Point mutations and sequence variants in *BRCA1* [5] and *BRCA2* [6] genes were previously identified in this cohort of Sri Lankan breast cancer patients. More recently, large genomic alterations have been described in *BRCA1* and *BRCA2* genes. Such large alterations lead to change in genomic copy number and cannot be detected by conventional methods [7]. Rearrangements have occasionally been reported in patients who are negative for *BRCA1/BRCA2* mutations [8].

There is a difference in the degree of *BRCA1/BRCA2* rearrangements found in different ethnic groups and populations. The prevalence of *BRCA1/BRCA2* genomic rearrangements in Asians is thought to be low. However studies done in these populations are limited. Several deletions and duplications have been reported from Singapore [9], Korea [8], Malaysia [10] and China [11]. There are

* Correspondence: kamani@ibmbb.cmb.ac.lk

¹Institute of Biochemistry, Molecular Biology and Biotechnology, University of Colombo, Colombo, Sri Lanka

Full list of author information is available at the end of the article

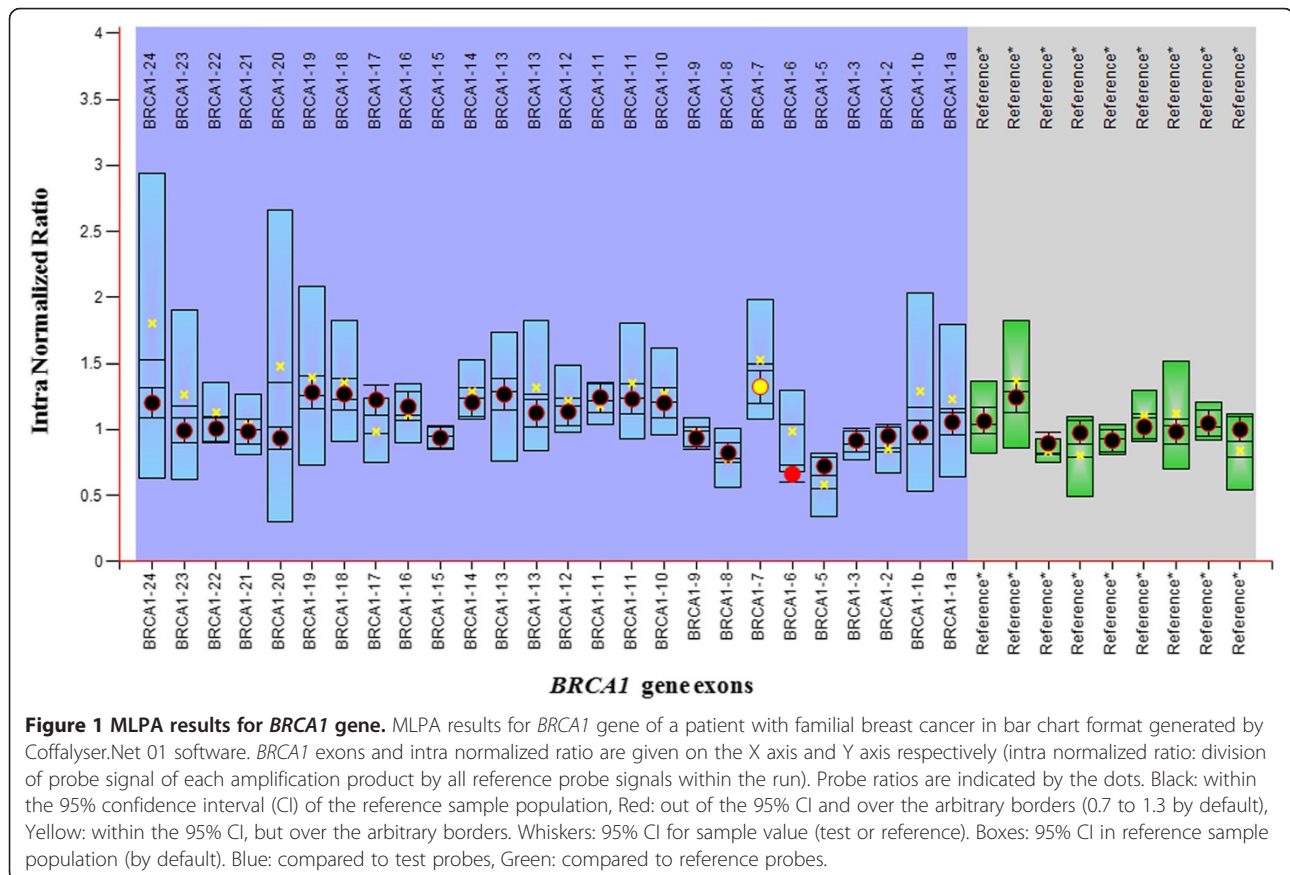
no published reports on the analysis of *BRCA1* and *BRCA2* large genomic rearrangements in Sri Lankans and this study examined the possibility of such genomic rearrangements in a cohort in which point mutations and sequence variants in *BRCA1* and *BRCA2* were previously described [5,6].

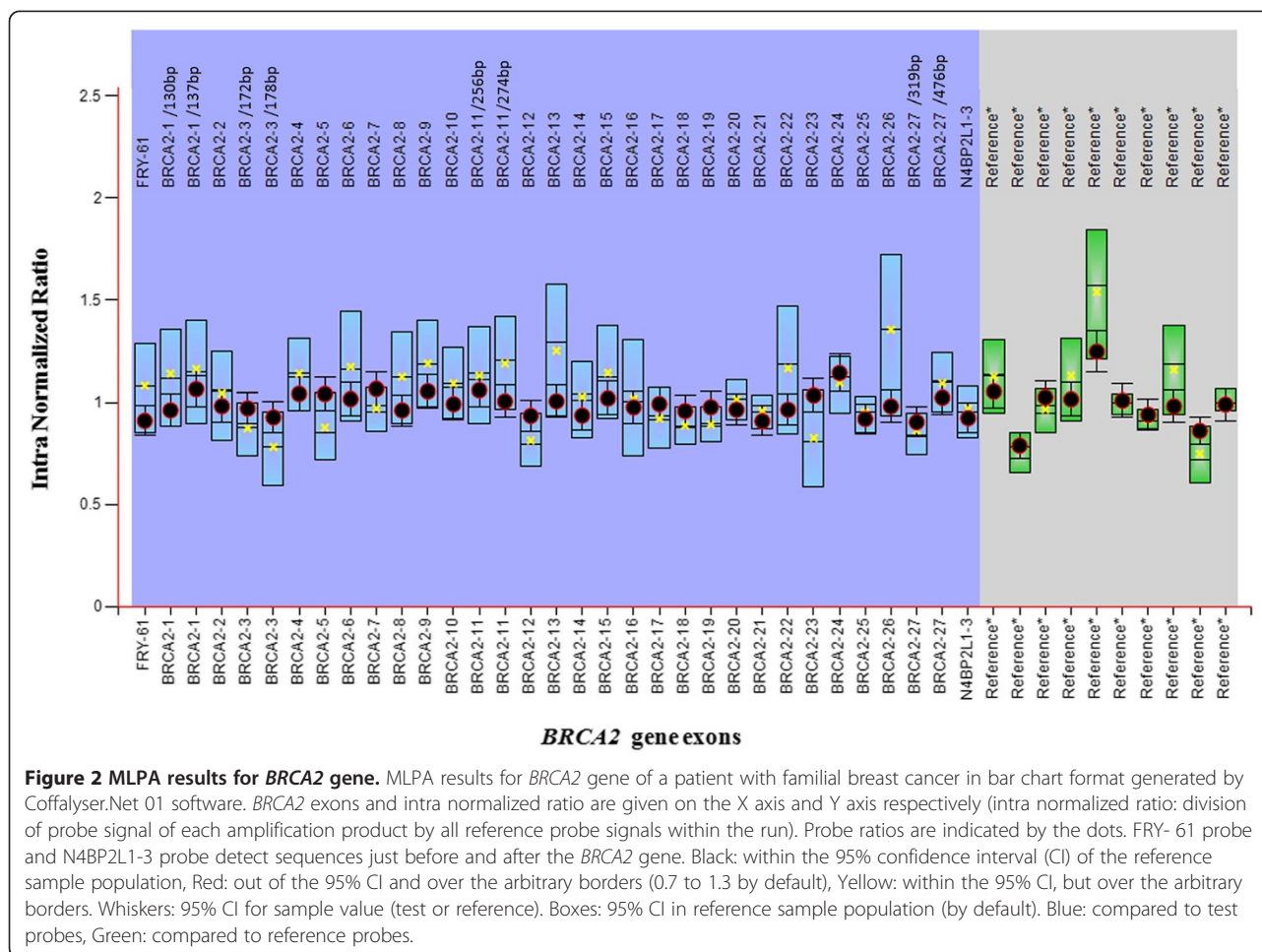
Results and discussion

MLPA analysis did not reveal any large genomic rearrangements in *BRCA2* gene in any of the subjects studied. However, according to MLPA analysis, one breast cancer patient was detected with an average intra normalized ratio (probe signal of each amplification product/ all reference probe signals within each sample run) of 0.64 in exon 6 of *BRCA1* gene which was predicted as an ambiguous deletion. An average ratio of 0.64 indicates a reduction in relative peak area of the amplification product by 36%. Figure 1 shows the MLPA results of the patient found to have an ambiguous exon 6 deletion for *BRCA1*. Figure 2 shows the MLPA results for the *BRCA2* gene of one of the familial breast cancer patients. The average ratios were within the 0.7-1.3 range indicating absence of exon deletions or duplications of the *BRCA2* gene in all samples analysed.

In the patient who showed an ambiguous deletion for *BRCA1* exon 6, the average ratio for exon 6 was outside the 95% confidence limits and outside the arbitrary range of 0.7 to 1.3. Although for exon 7, the average ratio exceeded the arbitrary range this was still within the 95% confidence limits. Thus we attempted to confirm the *BRCA1*/ exon 6 deletion by direct sequencing. The sample was sequenced (both forward and reverse strands) along with a healthy control sample for comparison. Sequence data were analysed using Mutation Surveyor DNA Variant Analysis Software – Softgenetics against reference sequence of *BRCA1* in the basic local alignment search tool (BLAST) published by National Centre for Biotechnology Information (NCBI), USA (accession no. L78833). Sequence data showed no change in the DNA sequence of exon 5, 6 and 7 of the patient compared to reference sequence. Data also indicated that the MLPA probe hybridization site was intact.

Familial breast cancer patients and at risk individuals were previously investigated for *BRCA1* and *BRCA2* mutations and some were positive for *BRCA1/2* mutations. From this cohort, three at risk individuals and two familial breast cancer patients were positive for clearly pathogenic *BRCA1* mutations and only six familial breast cancer





patients were positive for clearly pathogenic *BRCA2* mutations. The same cohort was used for the detection of *BRCA1* and *BRCA2* genomic rearrangements in the present study.

Detection of *BRCA* rearrangements is very important in a population since in some populations the occurrence of large deletions and duplications in either *BRCA1* or *BRCA2* is substantial. A prevalence of 2.1% for *BRCA1* large genomic rearrangements has been detected in Spanish hereditary breast/ovarian cancer families testing negative for point variations and small insertions/deletions in *BRCA1* and *BRCA2* [12]. *BRCA1/2* large genomic rearrangements have shown noticeable founder effect in certain European and American populations. One large genomic rearrangement, *BRCA1* exon 9–12 deletion, is considered as a mutation in Mexican population [13]. In Northern Finland, a large deletion of exons 1A-13 in *BRCA1* gene is currently identified to represent 14.3% (1/7) of the Finnish population [14].

Arthrobacter luteus (*Alu*) short stretches of repetitive DNA appear to be the main source of large genomic rearrangements by providing hotspots for unequal

homologous recombination [15,16]. Several large genomic rearrangements reported in *BRCA1* have been frequently recognized within intragenic *Alu* repeats [16] and *BRCA1* pseudogene (*ΨBRCA1*) 30 kb upstream [17,18]. To date, at least 81 different large genomic rearrangements have been found in *BRCA1* gene and account for 8%–27% of all *BRCA1* mutations. Alternatively *Alu* sequences are less common in *BRCA2* gene, where only few large genomic rearrangements are reported, accounting for 0%–11% of all *BRCA2* mutations [19-21].

The aim of this study was to assess the contribution of *BRCA1* and *BRCA2* rearrangements for predisposing to breast cancer in familial breast cancer patients and at risk individuals in Sri Lanka. We did not observe any conclusive large genomic rearrangements of *BRCA1* and *BRCA2* among the subjects studied. However in other Asian countries like Singapore three novel *BRCA* rearrangements have been found [9]. These were exon 13 duplication and exon 13–15 deletion of *BRCA1*, and exon 4–11 duplication in *BRCA2*. *BRCA1* genomic rearrangement found in Korean population involved exons 13–15. This exon 13–15 deletion has also been identified in

three families with America/French-German, Danish, and Singaporean/Indian ethnicities [12,22,23]. In a Malaysian population, two genomic rearrangements in *BRCA1* (exon 13–15 deletion and exon 1–14 deletion) and one in *BRCA2* (exon 14–16 deletion) were detected [10].

According to the findings of the present study *BRCA1* and *BRCA2* large genomic rearrangements are unlikely to significantly contribute to breast cancer in Sri Lanka. This is the first report on the analysis of *BRCA1* large genomic rearrangements in Sri Lanka.

The importance of recognizing the large rearrangements with respect to *BRCA1/2* is explained by *BRCA* rearrangements showing apparent founder effect in some populations which can be used as diagnostic tools. BRAC Analysis Large Rearrangement Test (BART) is already established in the country like US and also has been introduced as new updates to HBOC (Hereditary Breast and Ovarian Cancer) guidelines by National Comprehensive Cancer Network (NCCN). So BART is especially recommended for the individuals with strong personal and family history of breast and ovarian cancer along with routine BRCA analysis. Under such circumstances, it is so important to undergo large genomic rearrangements analysis by the familial breast cancer patients and their at risk individuals in a particular population as a diagnosis tool for breast cancer.

Conclusion

Although we failed to find any conclusive *BRCA1* large genomic rearrangement and did not find any *BRCA2* large genomic rearrangement in familial breast cancer patients and at risk individuals in the current study, a large study sample especially including Eurasians and other ethnic groups may reveal novel or reported genomic rearrangements among Sri Lankans.

Methods

Study participants

A total of 105 participants (N = 57 with a family history of breast cancer, N = 25 at risk individuals and N = 23 healthy controls without a personal or family history of any cancer) were studied. Mean age at diagnosis was 47.76 ± 9.55 years for familial breast cancer patients.

Fourteen familial patients were diagnosed below 40 years of age. Mean age at the MLPA analysis was 36.88 ± 14.95 for at risk individuals. Among the familial cases 34, 17 and 4 patients had one, two and three affected family members respectively. Two patients had 4 affected family members. According to histopathological data of familial breast cancer patients, 48 had infiltrating (invasive) ductal carcinoma and data were not recorded for remaining 9 patients. None of the patients had metastasis.

The majority of the patients and controls and all at-risk individuals were ethnically Sinhalese. There were no

descendants of Europeans. Ethical approval from the Research, Ethics and Higher Degree Committee, Institute of Biochemistry, Molecular Biology and Biotechnology, University of Colombo and written informed consent from the study participants were obtained prior to the study.

Genomic DNA was extracted using the protocol described by Miller et al. [24] from aliquots of peripheral blood samples that had been stored at -20°C . MLPA was performed using the SALSA MLPA KIT P002-C1 *BRCA1* probemix and SALSA MLPA KIT P090 *BRCA2* probemix (MRC-Holland, Amsterdam, Netherlands) for *BRCA1* and *BRCA2* genes according to manufacturer's protocol. The processed data obtained via MegaBACE Genetic Profiler software suite[®] v2.2 as well as via ABI GeneMapper[®] v4.1 were analyzed by using Coffalyser. Net 01 software.

Exon 5, 6 and 7 specific primers were designed in order to confirm the predicted ambiguous deletion detected from MLPA data. These primers were able to amplify whole regions of exon 5, 6 and 7 and MLPA probe hybridization site as well as several intronic regions. Resultant PCR products were subjected to direct sequencing using Applied Biosystems[™] 3500 DX Genetic Analyzer in order to locate the deletion site of exon 6 as well as to confirm the data obtained from MLPA analysis.

Competing interest

Authors declare that they have no competing interests.

Authors' contribution

SDS carried out molecular genetic studies, sequence alignment and drafted the manuscript. EHK and KHT conceived and designed the study, helped molecular genetic studies, data analysis and revision of the manuscript. IA and PA provided clinical expertise, recruitment of study participants and supervised clinical data and sample collection. All authors read and approved the final manuscript.

Acknowledgements

We thank Dr Wasanthi De Silva for sample collection and DNA extraction. This study was supported by the Sida/Secretariat for Research Cooperation Grant for Molecular Biology and Biotechnology awarded to E.H.K. and K.H.T. and constituted part of the PhD programme of S.deS.

Author details

¹Institute of Biochemistry, Molecular Biology and Biotechnology, University of Colombo, Colombo, Sri Lanka. ²National Cancer Institute, Colombo, Sri Lanka. ³Department of Pathology, Faculty of Medicine, University of Colombo, Colombo, Sri Lanka.

Received: 21 December 2013 Accepted: 29 May 2014

Published: 6 June 2014

References

1. Martin AM, Blackwood MA, Antin-Ozerkis D, Shih HA, Calzone K, Colligon TA, Seal S, Collins N, Stratton MR, Weber BL, Nathanson KL: **Germline mutations in *BRCA1* and *BRCA2* in breast-ovarian families from a breast cancer risk evaluation clinic.** *J Clin Oncol* 2001, **19**:2247–2253.
2. Peto J: **Cancer epidemiology in the last century and the next decade.** *Nature* 2001, **411**:390–395.
3. Fackenthal JD, Olopade OI: **Breast cancer risk associated with *BRCA1* and *BRCA2* in diverse populations.** *Nat Rev Cancer* 2007, **7**:937–948.

4. Cancer Incidence Data Sri Lanka Year 2001–2005: *Cancer Registry National Cancer Control Programme*. Colombo 5; 2009.
5. De Silva W, Karunanayake EH, Tennekoon KH, Allen M, Amarasinghe I, Angunawala P, Ziard MH: **Novel sequence variants and a high frequency of recurrent polymorphisms in *BRCA1* gene in Sri Lankan breast cancer patients and at risk individuals.** *BMC Cancer* 2008, **8**:214.
6. De Silva S, Tennekoon KH, Karunanayake EH, De Silva W, Amarasinghe I, Angunawala P: **Novel sequence variants and common recurrent polymorphisms of *BRCA2* in Sri Lankan breast cancer patients and a family with *BRCA1* mutations.** *Exp Ther Med* 2011, **2**:1163–1170.
7. Mazoyer S: **Genomic rearrangements in the *BRCA1* and *BRCA2* genes.** *Hum Mutat* 2005, **25**:415–422.
8. Seong MW, Cho SI, Noh DY, Han W, Kim SW, Park CM, Park HW, Kim SY, Kim JY, Park SS: **Low contribution of *BRCA1/2* genomic rearrangement to high-risk breast cancer in the Korean population.** *Fam Cancer* 2009, **8**:505–508.
9. Lim YK, Lau PT, Ali AB, Lee SC, Wong JE, Putti TC, Sng JH: **Identification of novel *BRCA* large genomic rearrangements in Singapore Asian breast and ovarian patients with cancer.** *Clin Genet* 2007, **71**:331–342.
10. Kang P, Mariapun S, Phuah SY, Lim LS, Liu J, Yoon SY, Thong MK, Mohd Taib NA, Yip CH, Teo SH: **Large *BRCA1* and *BRCA2* genomic rearrangements in Malaysian high risk breast-ovarian cancer families.** *Breast Cancer Res Treat* 2010, **124**:579–584.
11. Kwong A, Ng EK, Law FB, Wong HN, Wa A, Wong CL, Kurian AW, West DW, Ford JM, Ma ES: **Novel *BRCA1* and *BRCA2* genomic rearrangements in Southern Chinese breast/ovarian cancer patients.** *Breast Cancer Res Treat* 2012, **136**:931–933.
12. de la Hoya M, Gutiérrez-Enríquez S, Velasco E, Osorio A, Sanchez de Abajo A, Vega A, Salazar R, Esteban E, Llort G, Gonzalez-Sarmiento R, Carracedo A, Benítez J, Miner C, Díez O, Díaz-Rubio E, Caldes T: **Genomic rearrangements at the *BRCA1* locus in Spanish families with breast/ovarian cancer.** *Clin Chem* 2006, **52**:1480–1485.
13. Torres D, Rashid MU, Seidel-Renkert A, Weitzel JN, Briceno I, Hamann U, Colombian Breast Cancer Study Group (COLBCS): **Absence of the *BRCA1* del (exons 9–12) mutation in breast/ovarian cancer families outside of Mexican Hispanics.** *Breast Cancer Res Treat* 2009, **117**:679–681.
14. Pylkas K, Erkkö H, Nikkila J, Solyom S, Winqvist R: **Analysis of large deletions in *BRCA1*, *BRCA2* and *PALB2* genes in Finnish breast and ovarian cancer families.** *BMC Cancer* 2008, **8**:146.
15. Deininger PL, Batzer MA: **Alu repeats and human disease.** *Mol Genet Metab* 1999, **67**:183–193.
16. Smith TM, Lee MK, Szabo CI, Jerome N, McEuen M, Taylor M, Hood L, King MC: **Complete genomic sequence and analysis of 117 kb of human DNA containing the gene *BRCA1*.** *Genome Res* 1996, **6**:1029–1049.
17. Puget N, Gad S, Perrin-Vidoz L, Sinilnikova OM, Stoppa-Lyonnet D, Lenoir GM, Mazoyer S: **Distinct *BRCA1* rearrangements involving the *BRCA1* pseudogene suggest the existence of a recombination hot spot.** *Am J Hum Genet* 2002, **70**:858–865.
18. Montagna M, Santacatterina M, Torri A, Menin C, Zullato D, Chieco-Bianchi L, D'Andrea E: **Identification of a 3 kb Alu-mediated *BRCA1* gene rearrangement in two breast/ovarian cancer families.** *Oncogene* 1999, **18**:4160–4165.
19. Stadler ZK, Saloustros E, Hansen NA, Schluger AE, Kauff ND, Offit K, Robson ME: **Absence of genomic *BRCA1* and *BRCA2* rearrangements in Ashkenazi breast and ovarian cancer families.** *Breast Cancer Res Treat* 2010, **123**:581–585.
20. Sluiter MD, van Rensburg EJ: **Large genomic rearrangements of the *BRCA1* and *BRCA2* genes: review of the literature and report of a novel *BRCA1* mutation.** *Breast Cancer Res Treat* 2011, **125**:325–349.
21. Mahon SM: **Large genomic rearrangements in *BRCA1* and *BRCA2*. Implications for patient care.** *Oncol Nurs Forum* 2013, **40**:220–222.
22. Thomassen M, Gerdes AM, Cruger D, Jensen PK, Kruse TA: **Low frequency of large genomic rearrangements of *BRCA1* and *BRCA2* in Western Denmark.** *Cancer Genet Cytogenet* 2006, **168**:168–171.
23. Gad S, Caux-Moncoutier V, Pages-Berhouet S, Gauthier-Villars M, Coupier I, Pujol P, Frénay M, Gilbert B, Maugard C, Bignon YJ, Chevrier A, Rossi A, Fricker JP, Nguyen TD, Demange L, Aurias A, Bensimon A,

- Stoppa-Lyonnet D: **Significant contribution of large *BRCA1* gene rearrangements in 120 French breast and ovarian cancer families.** *Oncogene* 2002, **21**:6841–6847.
24. Miller SA, Dykes DD, Polesky HF: **A simple salting out procedure for extracting DNA from human nucleated cells.** *Nucleic Acids Res* 1988, **16**:12–15.

doi:10.1186/1756-0500-7-344

Cite this article as: De Silva et al.: Analysis of *BRCA1* and *BRCA2* large genomic rearrangements in Sri Lankan familial breast cancer patients and at risk individuals. *BMC Research Notes* 2014 **7**:344.

Submit your next manuscript to BioMed Central and take full advantage of:

- Convenient online submission
- Thorough peer review
- No space constraints or color figure charges
- Immediate publication on acceptance
- Inclusion in PubMed, CAS, Scopus and Google Scholar
- Research which is freely available for redistribution

Submit your manuscript at
www.biomedcentral.com/submit

