

RESEARCH ARTICLE

Open Access

Procalcitonin as a prognostic marker for sepsis: a prospective observational study

Saransh Jain¹, Sanjeev Sinha^{1*}, Surendra K Sharma¹, J C Samantaray², Praveen Aggrawal¹, Naval Kishore Vikram¹, Ashutosh Biswas¹, Seema Sood², Manish Goel¹, Madhuchhanda Das¹, Sreenivas Vishnubhatla³ and Nawaid Khan¹

Abstract

Background: Procalcitonin is useful for the diagnosis of sepsis but its prognostic value regarding mortality is unclear. This prospective observational study was designed to study the prognostic value of procalcitonin in prediction of 28 day mortality in patients of sepsis. Fifty-four consecutive patients of sepsis, severe sepsis and septic shock defined using the 2001 Consensus Conference SCCM/ESICM/ACCP/ATS/SIS criteria from medical Intensive Care Unit (ICU) of a tertiary care center in New Delhi, India were enrolled from July 2011 to June 2013. Procalcitonin (PCT), C-reactive protein (CRP) measurements were recorded on day 1, day 7 and day 28 of follow up.

Results: Procalcitonin value was a better predictor of all-cause short-term mortality than C-reactive protein. Those patients with Procalcitonin levels <7 ng/ml showed higher cumulative survival than those with level [greater than or equal to]7 ng/ml (69.1% vs. 39.5%, $p = 0.02$). No such effect was observed in relation to C-reactive protein. Procalcitonin levels [greater than or equal to]7 ng/ml predicted mortality with a hazard ratio of 2.6(1.1-6.3).

Conclusions: A Procalcitonin value [greater than or equal to]7 ng/ml obtained at the time of admission to the ICU is a predictor of short-term mortality and thus may allow the identification of those septic patients at increased mortality risk, and help improve their treatment.

Keywords: Sepsis, Prognosis, Procalcitonin, C-reactive protein

Background

Sepsis is one of the leading causes of mortality in intensive care units (ICUs) [1,2]. Prompt diagnosis and administration of appropriate antimicrobial therapy are essential to reduce complications associated with sepsis-related organ failure. However, sepsis response is complex and not all patients with infections display related signs or symptoms. The early detection of patients with unfavourable prognosis or with an increased risk of mortality is essential in order to prevent consequent organ dysfunction, which would increase the degree of complications and hence, patient mortality.

Procalcitonin (PCT), the 116 amino acids long precursor of calcitonin, is abnormally elevated in sepsis. Procalcitonin is regarded as a good diagnostic marker of sepsis in critically ill patients [3]. It has also been evaluated to shorten the course of antibiotic therapy in septic patients

[4]. Serum PCT levels have also been observed to increase with increasing severity of sepsis and organ dysfunction [5]. Moreover, administration of PCT to septic animals increases their risk of mortality [6] implying a relationship between high serum PCT and death. Thus, PCT levels may contribute to earlier and better stratification of ICU patients at the risk of death; however the correlation between the level of PCT and the prognosis of sepsis is unclear.

The present study was conducted to determine whether the level of serum PCT, in critically ill subjects with sepsis, serves as a useful prognostic indicator of short-term (28-day) mortality.

Methods

Patient population

This was a prospective observational study conducted in the Medical Intensive Care Unit (MICU) of Department of Medicine at the All India Institute of Medical Sciences (AIIMS) hospital, New Delhi, India from July 2011 to June 2013.

* Correspondence: drsanjeevsinha2002@yahoo.com

¹Department of Medicine, All India Institute of Medical Sciences, Ansari Nagar, New Delhi 110029, India

Full list of author information is available at the end of the article

In the present study, all consecutive patients who fulfilled the criteria for sepsis laid down by 2001 Consensus Conference SCCM/ESICM/ACCP/ATS/SIS [1] were enrolled. Patients who underwent surgery or trauma during the previous 72 hours or with chronic kidney disease, burns, acute pancreatitis, or aged less than 18 years were excluded (E-protocol). A written informed consent was obtained from patients or surrogates as specified in the Institute Ethics Committee, All India Institute of Medical Sciences, New Delhi approved study protocol.

Study design

Recorded data included demographic characteristics (age and sex), together with the laboratory test findings (basic biochemistry, complete blood count, coagulation and arterial blood gases), microbiological culture results, length of stay in ICU and hospital and outcome. Organ dysfunction was assessed based on the definitions proposed by the SCCM/ESICM/ACCP/ATS/SIS consensus conference [1]. Infection was diagnosed by standard clinical, laboratorial and microbiological parameters. All patients were treated according to the standard institutional protocol for management of sepsis and septic shock, based on recommendations from the Surviving Sepsis Campaign [7]. The duration of antimicrobial therapy was guided by culture data, site of infection and treating physician. Acute Physiology and Chronic Health Evaluation (APACHE II) score, Simplified Acute Physiology Score (SAPS II) and Sequential Organ Failure Assessment (SOFA) scores on day-1 and procalcitonin (PCT) and C-reactive protein (CRP) levels on day-1, 7 and 28 of diagnosis of sepsis were calculated. The endpoint was defined as mortality related to sepsis within the first 28 days of admission to ICU. The associations of 28-day mortality with APACHE II and SOFA score severity, CRP value, and PCT value were examined.

Measurement of biomarkers

Procalcitonin and high sensitivity CRP (hsCRP) were measured in serum samples that were collected on day-1, 7 and 28 of enrolment. The venous blood (5 mL) was drawn, kept at room temperature for 2 h and centrifuged at 3000 rpm for 10 min; and the supernatant was stored at -70°C until analysis. Serum levels were measured using enzyme linked immunosorbent assay (ELISA) according to the manufacturer's instruction (RayBiotech, Inc. Norcross, Georgia and Diagnostic Biochem Canada Inc.).

Statistical analysis

The continuous variables were expressed as the mean \pm SD or as the median and interquartile range (IQR) in the case of a non-normal distribution. Categorical variables were summarised as frequencies with percentages in parentheses. Quantitative variables at admission were compared between survivors and non-survivors using Student's t-test

or Wilcoxon rank sum test and qualitative variables by chi-square test. Comparison of the means of continuous variables for both the groups was based on analysis of variance or the nonparametric Kruskal-Wallis test, where indicated. Based on the day of the death or discharge, Kaplan-Meier survival analysis was performed. Log rank test was used to compare the survival between different categories of each variable. Receiver operating characteristic (ROC) curves were used to select the optimal cut-offs for procalcitonin, CRP concentrations and APACHE II, SOFA and SAPS II scores. Multivariable Cox regression analysis was done to identify independent predictors of mortality. All of the clinical and laboratory test parameters found by the univariable analysis correlated to the end prognosis (in-hospital mortality) were entered in the model ($p < 0.10$). An alpha risk with $p < 0.05$ was assumed for considering a relationship to be statistically significant. All analyses were performed on Stata software v.11.2.

Results

A total of seventy consecutive patients with sepsis, admitted to AIIMS MICU were enrolled. Sixteen patients were excluded based on the exclusion criteria (Figure 1). Fifty-four patients with sepsis constituted the study cohort. The mean age was 50.68 ± 18.67 years and 55% were male. Patients were critically ill with baseline mean APACHE II, SOFA and SAPS II scores of 24.7, 8.3 and 53.2, respectively. Respiratory tract was the source of sepsis in majority of cases (71%) followed by genitourinary tract (12%), skin and soft tissue (10%) and abdomen (9%). Total 55% patients showed positivity in any culture, whereas 15% in blood culture. Majority of organisms isolated were gram negative (79%). *Acinetobacter* spp. was the most common microorganism isolated from tracheal aspirates 10/20 (50%). *Klebsiella* spp. and *Acinetobacter* spp. were the most common microorganisms isolated from blood culture [2/8 (25%) each] (Table 1).

Table 2 depicts the baseline characteristics of survivors and non-survivors. The two groups were similar in baseline characteristics except that the non-survivors had significantly lower mean blood pressure than that of the

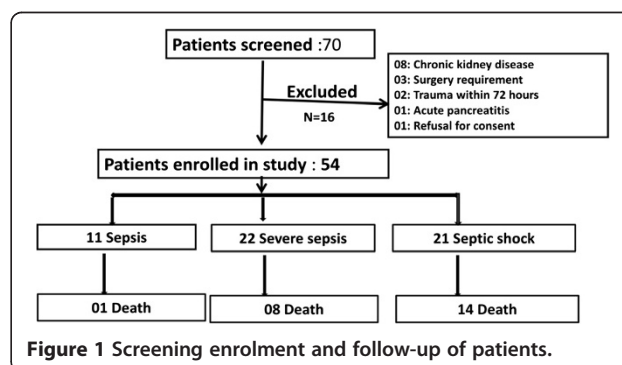


Figure 1 Screening enrolment and follow-up of patients.

Table 1 Microbiological characteristics of the patients

Organism	Blood	Tracheal aspirate	Urine	Skin
<i>Acinetobacter</i> spp.	2	10	0	0
<i>Klebsiella</i> spp.	4	0	0	
<i>Escherichia coli</i>	2	1	2	0
<i>Pseudomonas</i> spp.	0	2	0	0
<i>Enterococcus</i> spp.	1	0	0	0
<i>Staphylococcus aureus</i>	0	1	0	3
<i>Staphylococcus epidermidis</i>	1	0	0	1
<i>Enterobacter</i> spp.	0	1	0	0
<i>Haemophilus influenzae</i>	0	1	0	0

survivors (72.96 ± 11.51 vs. 82.29 ± 14.06 ; $p = 0.01$); also they had higher incidence of renal dysfunction at onset with 74% vs. 45% ($p = 0.03$).

All the baseline severity of illness scores (APACHE II, SOFA, SAPS II) were significantly higher among non-survivors than that of survivors. Among biochemical variables, non-survivors had significantly lower levels of bicarbonate (19.3 ± 8.5 vs. 25.4 ± 10.5 mmol/L; $p = 0.02$), deranged prothrombin time (16.96 ± 5.22 vs. 13.74 ± 2.82 s; $p < 0.01$) and elevated levels of lactate [2.4 ($1.3-4.3$) vs. 1.2 ($0.8-2.1$) mmol/L; $p = 0.03$] than that of survivors.

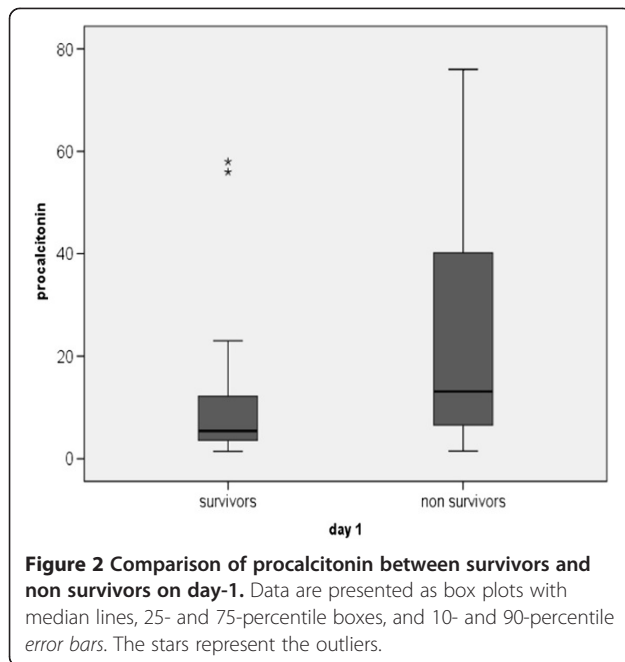
Among the biomarkers, levels of serum procalcitonin were significantly higher in non-survivors compared to that of survivors [13.1 ($6.3-42$) vs. 5.38 ($3.48-12.8$) ng/mL; $p < 0.01$] (Figure 2); whereas hsCRP levels did not show any significant difference between both the groups (21 ± 7.39 vs. 20.10 ± 7.37 mg/dL; $p = 0.74$) (Figure 1).

Procalcitonin levels were also significantly higher in patients with septic shock as compared to that with severe

Table 2 Baseline characteristics of patients

Characteristics	All patients (n = 54)	Alive (n = 31)	Dead (n = 23)	p-value
Age (years)	50.7 ± 18.7	50.5 ± 18.3	50.9 ± 19.4	0.94
Male sex	30 (55%)	18 (58%)	12 (52%)	0.66
ARDS	22 (41%)	10 (32%)	12 (52%)	0.14
Renal dysfunction	31 (57%)	14 (45%)	17 (74%)	0.03
Mean BP (mm hg)	78.3 ± 13.7	82.3 ± 14.06	72.9 ± 11.5	0.01
Temperature (°F)	100.2 ± 1.5	99.9 ± 1.2	100.5 ± 1.8	0.17
TLC (/cu mm)	17900 (15200–24500)	17800 (14400–24500)	19900 (16000–25500)	0.24
Urea (mg/dL)	65 (52–93)	62 (49–75)	76 (61–108)	0.11
Creatinine (mg/dL)	1.5 (0.8–2.4)	1.00 (0.8–1.8)	1.80 (0.9–3.6)	0.11
Prothrombin time (s)	15.1 ± 4.2	13.7 ± 2.8	16.9 ± 5.2	0.005
Blood sugar (mg/dL)	140.4 ± 63.8	138.5 ± 52.1	142.9 ± 78.1	0.80
pH	7.2 ± 0.1	7.3 ± 0.13	7.25 ± 0.20	0.38
Bicarbonate (mmol/L)	22.7 ± 10.1	25.5 ± 10.4	19.1 ± 8.4	0.02
Albumin (gm/dL)	2.9 ± 0.6	3.0 ± 0.6	2.8 ± 0.8	0.25
Lactate (mmol/L)	1.8 (0.8–3.2)	1.2 (0.8–2.1)	2.4 (1.3–4.3)	0.01
Positive culture	24 (44%)	13 (42%)	11 (48%)	0.66
Positive blood culture	8 (15%)	5 (16%)	3 (13%)	0.75
Mechanical ventilation	37 (63%)	16 (52%)	21 (91%)	0.002
Duration of ICU stay	5 (3–6)	5 (4–6)	4 (3–5)	0.75
Duration of hospital stay	10.9 ± 8.1	14.6 ± 6.1	5.1 ± 3.5	0.001
Procalcitonin (ng/mL)	6.9 (3.6–19.2)	5.4 (3.5–12.8)	13.1 (6.3–42)	0.008
CRP (mg/dL)	17.6 ± 7.3	20.1 ± 7.4	21 ± 7.4	0.76
SOFA score (Day 1)	8.3 ± 3.7	6.7 ± 3.4	10.5 ± 3.2	0.0001
APACHE II score (Day 1)	24.7 ± 7.8	21.9 ± 7.1	28.6 ± 7.1	0.001
SAPS II score (Day 1)	53.2 ± 16.8	47.0 ± 14.9	61.5 ± 15.8	0.001

Values as mean ± SD or median (interquartile range) or n (percentage); ARDS: Acute respiratory distress syndrome; ICU: Intensive Care Unit; BP: Blood pressure; CRP: C-reactive protein; APACHE: Acute physiology and chronic health evaluation; SAPS: Simplified acute physiology score; SOFA: Sequential organ function assessment.



sepsis (34.6 ± 36.7 vs. 15.0 ± 29.9 ng/mL; $p = 0.03$) and sepsis (34.6 ± 36.7 vs. 3.8 ± 1.6 ng/mL; $p = 0.008$) (Figure 3).

The level of procalcitonin decreased significantly in survivors over 28 days. The median of procalcitonin fell from 5.4 ng/mL on day-1 to 3.1 ng/mL on day-7 ($p = 0.002$) to 0.1 ng/mL on day-28 ($p = 0.01$) (Figure 3).

Also the level of hsCRP decreased among survivors over 28 days. Mean hsCRP fell from 17.3 mg/dL on day-1 to 14.5 mg/dL on day-7 ($p = 0.02$) to 4.8 mg/dL on day-28 ($p < 0.01$) (Figure 2).

The 28-day mortality in the present study was 43%. Mortality was highest in patients with septic shock (61%),

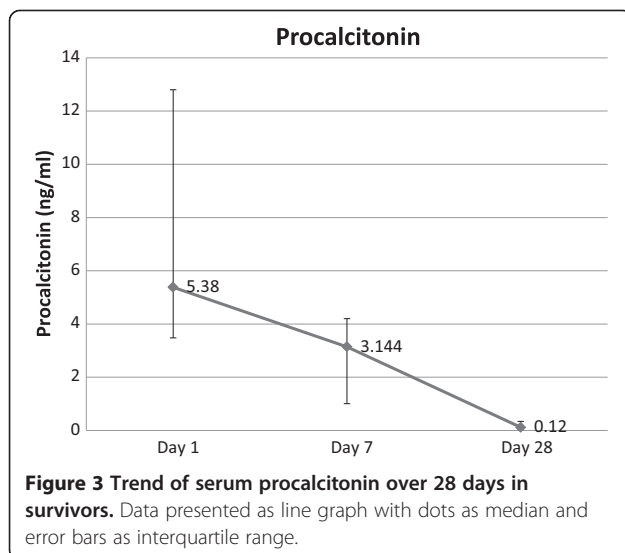


Figure 3 Trend of serum procalcitonin over 28 days in survivors. Data presented as line graph with dots as median and error bars as interquartile range.

followed by severe sepsis (41%) and sepsis (4%). Baseline variables that predicted mortality in univariable analysis included renal dysfunction, low mean blood pressure, APACHE II, SOFA, SAPS II score, serum lactate and serum procalcitonin.

In multivariate analysis, only APACHE II score at the time of admission was found to be an independent predictor of mortality ($p = 0.005$; HR 3.4(1.4-9.6)).

Discussion

Despite advances in medical science and antibiotic therapy, sepsis remains a major cause of morbidity and mortality in ICU. In the present study, the mortality due to sepsis was 43%; the overall mortality observed in this study was consistent with the reported wide range (18% to 56%) of overall mortality due to sepsis [8,9]. Also mortality increased with severity of sepsis, the maximum being due to septic shock (61%) which was similar to the rates reported in previous studies [9,10].

The place of study being a predominantly respiratory care ICU, lower respiratory tract was the most common source of infection (71%). Fifty-five percent of the subjects had culture positivity which is comparable with previous reports; [11] but relatively lower values have also been reported [9,12]. Blood culture positivity was only 15%, which is relatively lower than previous reports [12,13]. One possible explanation for this difference could be the fact that this institute is a tertiary care centre in a large city and hence some of the patients are delayed referrals, where most of them having already received antibiotics prior to admission. The majority of microorganisms isolated were gram negative in nature with *Acinetobacter* spp. being the most commonly identified (35%). This could be due to the clinic being predominantly respiratory care ICU and a tertiary care hospital attending predominantly the patients who already have received primary care.

Culture positivity was not predictive of prognosis ($p = 0.66$; HR 0.84 (0.37-1.90)). This finding is similar to previous studies that did not establish culture positivity as a predictor of mortality [2,14].

In this study, it was observed based on univariable analysis, a serum procalcitonin level ≥ 7 ng/mL on day-1 predicted mortality (HR 2.5(1.1-6.2); $p = 0.02$). This finding corroborates the findings of earlier studies by Meng et al. and Clec'h et al. [15,16]. On the contrary, some studies did not find procalcitonin to predict mortality [17-20]; the differences could be due to the fact that this study was conducted in an exclusive medical ICU, thereby excluding surgical and post traumatic patients who might have a spurious increase in procalcitonin [16,21] as compared to mixed ICU populations in some studies [17-19]. In addition, since most of the microorganisms isolated were gram negative, a gram negative septicaemia has been found to be better correlated with serum procalcitonin

levels [22,23]. It was also observed that the level of procalcitonin declined significantly in survivors over the course of 28 days. Several studies [17,24,25] have implicated the levels of procalcitonin to be a good predictor of prognosis in sepsis; however this could not be compared with that of non-survivors since their median survival was 4 (3–5) days. This might be due to the fact that this study population was sicker with a mean APACHE II score of 28 in non-survivors. This difference could not have been due to the care provided in the ICU as the duration of stay in ICU of survivors and non-survivors was similar [5(4–6) vs. 4(3–5) days; $p = 0.75$]. Moreover, patients in both the groups were treated by the same group of physicians according to the institution protocol based on surviving sepsis guidelines [26]. It was also observed that the level of serum procalcitonin increases with severity of sepsis and organ dysfunction which could also be used to identify patients with higher risk of adverse outcomes. These findings are similar to that reported by Giamarellos-Baorboulis et al. [5] (Figures 4 and 5).

On the contrary, no significant differences between levels of hsCRP were observed in two groups and also hsCRP did not predict mortality in sepsis. This finding is supported by previous studies [15,25,27,28]. It was also found that the level of hsCRP fell over the course of in-hospital stay in survivors which might be due to the fact that CRP is an acute inflammatory reactant and its levels improve with time (Figure 6).

The APACHE II, SOFA and SAPS II scores (APACHE II ≥ 24 , SAPS II ≥ 51 , and SOFA ≥ 9) computed from the baseline variables were found to be predictors of mortality in univariable analysis. APACHE II score was an independent predictor of mortality in multivariate analysis [$p = 0.005$; HR 3.4(1.4-9.6)].

This study is significant based on the following merits. First, this study was done in an exclusive medical ICU,

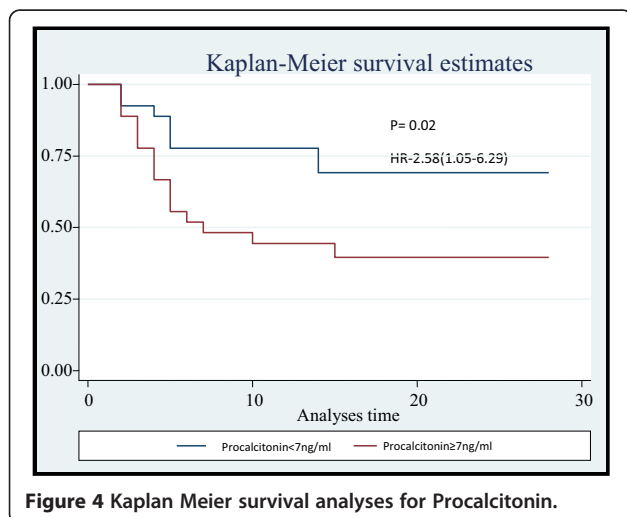


Figure 4 Kaplan Meier survival analyses for Procalcitonin.

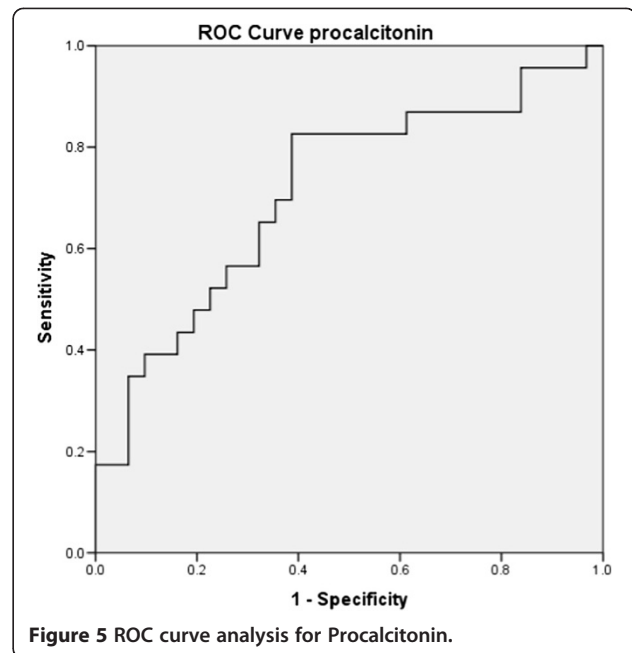


Figure 5 ROC curve analysis for Procalcitonin.

thereby excluding post surgical trauma cases which have been shown to spuriously increase levels of procalcitonin. The markers were repeated at regular intervals to determine the trend in the course of markers.

Some of the limitations of this study include this being a single centre study with a relatively small sample size and majority of patients were receiving course of antibiotics prior to admission. The levels of procalcitonin were measured using an ELISA based assay which is relatively less

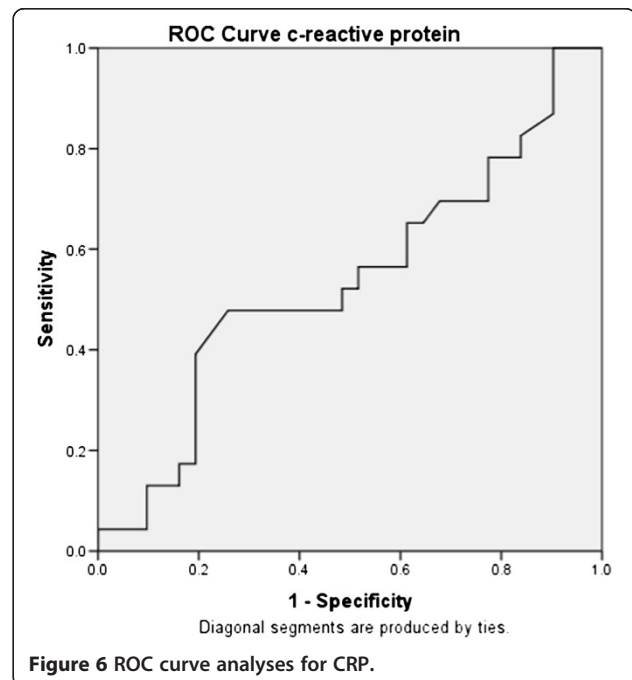


Figure 6 ROC curve analyses for CRP.

sensitive than time-resolved amplified cryptate emission (TRACE) technology in which the duration of assay is rapid (19 min) but expensive [29]. Levels of procalcitonin were measured only at three points in the course of the study and also the levels of procalcitonin and hsCRP could not be compared on serial measurements due to early mortality. Moreover, weekly measurements of procalcitonin cannot guide antibiotic therapy.

Conclusions

In conclusion, it has been observed that despite the use of optimal support and better strategy, the mortality rate in sepsis still remains high (56.2%). Elevated level of procalcitonin at admission is a better predictor of mortality than high sensitivity CRP that helps in the stratification of patients and to identify patients at higher risk of adverse outcomes. However, markers are recommended to be considered only in conjunction with clinical history and physical examination and in the light of experience. Furthermore, a comprehensive knowledge of the biology, advantages and limitations of markers is imperative before applying them as a routine clinical tool with prognostic value. A future randomised control study of PCT and non-PCT monitored patients could determine if outcome and cost benefits accrue with PCT use.

Abbreviations

ACCP: American College of Chest Physician; APACHE: Acute physiology and chronic health evaluation; ATS: American Thoracic Society; CRP: C-reactive protein; ESICM: European society of intensive care medicine; hsCRP: High sensitivity C-reactive protein; ICU: Intensive care unit; MICU: Medical ICU; PCT: Procalcitonin; SAPS: Simplified acute physiology score; SCCM: Society of critical care medicine; SIRS: Systemic inflammatory response syndrome; SIS: Surgical infection society; SOFA: Sequential organ function assessment.

Competing interests

All authors had full access to all of the data in the study and take responsibility for the integrity of the data and the accuracy of the data analysis. None of the authors have any real or potential and internal or external conflicts of interest related to this work. All authors declare no potential conflicts of interest with any companies/organisations whose products or services may be discussed in this article.

Authors' contribution

SJ contributed to study conception and design, collection analysis and interpretation of data, drafting the manuscript for important intellectual content. SS contributed to study conception and design, analysis and interpretation of data, drafting the manuscript for important intellectual content, and reading and approving the final manuscript. SKS, MG & MD contributed to study conception and design, drafting the manuscript for important intellectual content, and reading and approving the final manuscript. JCS contributed to estimation of microbial etiology and analysis of data, drafting the manuscript for important intellectual content. PA contributed to analysis of data and writing and revision of the manuscript. NKV contributed to study conception and design, analysis and interpretation of data. AB contributed to study conception and design, analysis and interpretation of data and reading and approving the final manuscript. SS contributed to estimation of microbial etiology and analysis of data. SV contributed to the statistical analysis of data and writing and revision of the manuscript. NK contributed to biomarkers estimation, analysis of data. All authors read and approved the final manuscript.

Acknowledgements

This study was sponsored through a research grant from AIIMS, New Delhi, India. The sponsor did not have any role in the study design, in the collection, analysis and interpretation of the data, in the writing of the manuscript, and in the decision to submit the manuscript for publication. We are indebted to the nursing staff and other supporting staff of the intensive care unit of the Department of Medicine, All India Institute of Medical Sciences, New Delhi. We are also thankful to all lab personnel who assisted in this study.

Author details

¹Department of Medicine, All India Institute of Medical Sciences, Ansari Nagar, New Delhi 110029, India. ²Department of Microbiology, All India Institute of Medical Sciences, New Delhi, India. ³Department of Biostatistics, All India Institute of Medical Sciences, New Delhi, India.

Received: 30 October 2013 Accepted: 7 July 2014

Published: 17 July 2014

References

1. Levy MM, Fink MP, Marshall JC, Abraham E, Angus D, Cook D, Cohen J, Opal SM, Vincent J-L, Ramsay G: **SCCM/ESICM/ACCP/ATS/SIS International Sepsis Definitions Conference**. *Intensive Care Med* 2001, **2003**(29):530-538.
2. Rangel-Frausto MS, Pittet D, Costigan M, Hwang T, Davis CS, Wenzel RP: **The natural history of the systemic inflammatory response syndrome (SIRS). A prospective study**. *JAMA* 1995, **273**:117-123.
3. Uzzan B, Cohen R, Nicolas P, Cuherat M, Perret G-Y: **Procalcitonin as a diagnostic test for sepsis in critically ill adults and after surgery or trauma: a systematic review and meta-analysis**. *Crit Care Med* 2006, **34**:1996-2003.
4. Bouadma L, Luyt C-E, Tubach F, Cracco C, Alvarez A, Schwebel C, Schortgen F, Lasocki S, Veber B, Dehoux M, Bernard M, Pasquet B, Régnier B, Brun-Buisson C, Chastre J, Wolff M: **Use of procalcitonin to reduce patients' exposure to antibiotics in intensive care units (PRORATA trial): a multicentre randomised controlled trial**. *Lancet* 2010, **375**:463-474.
5. Giamarellos-Bourboulis EJ, Mega A, Grecka P, Scarpa N, Koratzanis G, Thomopoulos G, Giamarellou H: **Procalcitonin: a marker to clearly differentiate systemic inflammatory response syndrome and sepsis in the critically ill patient?** *Intensive Care Med* 2002, **28**:1351-1356.
6. Nylen ES, Whang KT, Snider RH Jr, Steinwald PM, White JC, Becker KL: **Mortality is increased by procalcitonin and decreased by an antiserum reactive to procalcitonin in experimental sepsis**. *Crit Care Med* 1998, **26**:1001-1006.
7. Dellinger RP, Levy MM, Rhodes A, Annane D, Gerlach H, Opal SM, Sevransky JE, Sprung CL, Douglas IS, Jaeschke R, Osborn TM, Nunnally ME, Townsend SR, Reinhart K, Kleinpell RM, Angus DC, Deutschman CS, Machado FR, Rubenfeld GD, Webb SA, Beale RJ, Vincent J-L, Moreno R: **Surviving sepsis campaign: international guidelines for management of severe sepsis and septic shock: 2012**. *Crit Care Med* 2013, **41**:580-637.
8. Martin GS, Mannino DM, Eaton S, Moss M: **The epidemiology of sepsis in the United States from 1979 through 2000**. *N Engl J Med* 2003, **348**:1546-1554.
9. Grozdanovski K, Milenkovic Z, Demiri I, Spasovska K, Cvetanovska M, Kirova-Urošević V: **Early prognosis in patients with community-acquired severe sepsis and septic shock: analysis of 184 consecutive cases**. *Prilozi* 2012, **33**:105-116.
10. Brun-Buisson C, Doyon F, Carlet J, Dellamonica P, Gouin F, Lepoutre A, Mercier JC, Offenstadt G, Régnier B: **Incidence, risk factors, and outcome of severe sepsis and septic shock in adults. A multicenter prospective study in intensive care units**. French ICU Group for Severe Sepsis. *JAMA* 1995, **274**:968-974.
11. Heffner AC, Horton JM, Marchick MR, Jones AE: **Etiology of illness in patients with severe sepsis admitted to the hospital from the Emergency Department**. *Clin Infect Dis* 2010, **50**:814-820.
12. Bernard GR, Vincent JL, Laterre PF, LaRosa SP, Dhainaut JF, Lopez-Rodriguez A, Steingrub JS, Garber GE, Helterbrand JD, Ely EW, Fisher CJ Jr: **Efficacy and safety of recombinant human activated protein C for severe sepsis**. *N Engl J Med* 2001, **344**:699-709.
13. Bates DW, Sands K, Miller E, Lanken PN, Hibberd PL, Graman PS, Schwartz JS, Kahn K, Snyderman DR, Parsonnet J, Moore R, Black E, Johnson BL, Jha A, Platt R: **Predicting bacteremia in patients with sepsis syndrome**. *Academic Medical*

- Center Consortium Sepsis Project Working Group. *J Infect Dis* 1997, **176**:1538–1551.
14. Artero A, Zaragoza R, Camarena JJ, Sancho S, González R, Nogueira JM: **Prognostic factors of mortality in patients with community-acquired bloodstream infection with severe sepsis and septic shock.** *J Crit Care* 2010, **25**:276–281.
 15. Meng F-S, Su L, Tang Y-Q, Wen Q, Liu Y-S, Liu Z-F: **Serum procalcitonin at the time of admission to the ICU as a predictor of short-term mortality.** *Clin Biochem* 2009, **42**:1025–1031.
 16. Clec'h C, Fosse J-P, Karoubi P, Vincent F, Chouahi I, Hamza L, Cupa M, Cohen Y: **Differential diagnostic value of procalcitonin in surgical and medical patients with septic shock.** *Crit Care Med* 2006, **34**:102–107.
 17. Karlsson S, Heikkinen M, Pettilä V, Alila S, Väisänen S, Pulkki K, Kolho E, Ruokonen E: **Predictive value of procalcitonin decrease in patients with severe sepsis: a prospective observational study.** *Crit Care* 2010, **14**:R205.
 18. Choi SW, Kim H, Kim KH, Shin DW, Park JS, Roh JY, Park JM: **Procalcitonin as a prognosis marker for the severe sepsis and septic shock patients in Emergency Department.** *Korean J Critical Care Med* 2011, **26**:250.
 19. Dahaba AA: **Procalcitonin for early prediction of survival outcome in postoperative critically ill patients with severe sepsis.** *Br J Anaesth* 2006, **97**:503–508.
 20. Heper Y, Akalın EH, Mistik R, Akgöz S, Töre O, Göral G, Oral B, Budak F, Helvacı S: **Evaluation of serum C-reactive protein, procalcitonin, tumor necrosis factor alpha, and interleukin-10 levels as diagnostic and prognostic parameters in patients with community-acquired sepsis, severe sepsis, and septic shock.** *Eur J Clin Microbiol Infect Dis* 2006, **25**:481–491.
 21. Sauerland S, Hensler T, Bouillon B, Rixen D, Raum MR, Andermahr J, Neugebauer EAM: **Plasma levels of procalcitonin and neopterin in multiple trauma patients with or without brain injury.** *J Neurotrauma* 2003, **20**:953–960.
 22. Kocazeybek B, Küçüköğlü S, Oner YA: **Procalcitonin and C-reactive protein in infective endocarditis: correlation with etiology and prognosis.** *Chemotherapy* 2003, **49**:76–84.
 23. Giamarellou H, Giamarellos-Bourboulis EJ, Repoussis P, Galani L, Anagnostopoulos N, Grecka P, Lubos D, Aoun M, Athanassiou K, Bouza E, Devigili E, Krçmery V, Menichetti F, Panaretou E, Papageorgiou E, Plachouras D: **Potential use of procalcitonin as a diagnostic criterion in febrile neutropenia: experience from a multicentre study.** *Clin Microbiol Infect* 2004, **10**:628–633.
 24. Schröder J, Staubach K-H, Zabel P, Stüber F, Kremer B: **Procalcitonin as a marker of severity in septic shock.** *Langenbeck's Arch Surg* 1999, **384**:33–38.
 25. Claeys R, Vinken S, Spapen H, Ver Elst K, Decochez K, Huyghens L, Goris FK: **Plasma procalcitonin and C-reactive protein in acute septic shock: clinical and biological correlates.** *Crit Care Med* 2002, **30**:757–762.
 26. Briegel J, Möhnle P: **International guidelines of the Surviving Sepsis Campaign: Update 2012.** *Anaesthesist* 2013, **62**:304–309.
 27. Pettila V, Hynninen M, Takkunen O, Kuusela P, Valtonen M: **Predictive value of procalcitonin and interleukin 6 in critically ill patients with suspected sepsis.** *Intensive Care Med* 2002, **28**:1220–1225.
 28. Silvestre J, Póvoa P, Coelho L, Almeida E, Moreira P, Fernandes A, Mealha R, Sabino H: **Is C-reactive protein a good prognostic marker in septic patients?** *Intensive Care Med* 2009, **35**:909–913.
 29. Snider RH Jr, Nylen ES, Becker KL: **Procalcitonin and its component peptides in systemic inflammation: immunochemical characterization.** *J Investig Med* 1997, **45**:552–560.

doi:10.1186/1756-0500-7-458

Cite this article as: Jain et al.: Procalcitonin as a prognostic marker for sepsis: a prospective observational study. *BMC Research Notes* 2014 **7**:458.

Submit your next manuscript to BioMed Central and take full advantage of:

- Convenient online submission
- Thorough peer review
- No space constraints or color figure charges
- Immediate publication on acceptance
- Inclusion in PubMed, CAS, Scopus and Google Scholar
- Research which is freely available for redistribution

Submit your manuscript at
www.biomedcentral.com/submit

