

RESEARCH ARTICLE

Open Access



# Retrospective analysis of the efficacy of chemotherapy and molecular targeted therapy for advanced pulmonary pleomorphic carcinoma

Yosuke Tamura<sup>1,2</sup>, Yutaka Fujiwara<sup>1,3\*</sup>, Noboru Yamamoto<sup>1,3</sup>, Hiroshi Nokihara<sup>1</sup>, Hidehito Horinouchi<sup>1</sup>, Shintaro Kanda<sup>1</sup>, Yasushi Goto<sup>1</sup>, Emi Kubo<sup>1</sup>, Shinsuke Kitahara<sup>1</sup>, Kenjiro Tsuruoka<sup>1</sup>, Koji Tsuta<sup>4</sup> and Yuichiro Ohe<sup>1</sup>

## Abstract

**Background:** Pulmonary pleomorphic carcinoma (PPC) follows an aggressive clinical course and outcomes are disappointing. Due to its rarity, however, the clinicopathological and molecular characteristics of this disease remain unclear.

**Methods:** We retrospectively evaluated the efficacy of chemotherapy and molecular targeted therapy in 16 patients with PPC who received chemotherapy or EGFR-TKI. We also investigated the status of *EGFR* mutation, *KRAS* mutation and ALK expression.

**Results:** On histologic review of the malignant epithelial component, adenocarcinoma was identified in seven cases (43.8 %), large cell carcinoma in four (25.0 %), and squamous cell carcinoma in two (12.5 %). For the sarcomatoid component, 14 cases (87.5 %) had both spindle cell tumor and giant cell and 2 (12.5 %) had giant cell. Eleven patients received cytotoxic chemotherapy as first-line but did not achieve an objective response, although one patient who received docetaxel as second-line achieved a partial response. We also found that one patient achieved long stable disease of about 9 years without progression after receiving cisplatin and gemcitabine treatment. *EGFR* mutation, *KRAS* mutation and ALK expression were investigated in 14 patients whose tumor specimens were available. *EGFR* mutation was observed in 2 (14.3 %) and *KRAS* mutation in 3 (21.4 %), while no patient was positive for ALK expression. One patient harboring *EGFR* exon 19 deletion was treated with gefitinib after postoperative recurrence and achieved a complete response of about 35 months.

**Conclusions:** Although advanced PPC showed a poor response to chemotherapy, one patient with *EGFR* mutation achieved an extended complete response. We therefore recommend the evaluation of driver gene alteration such as *EGFR* in the treatment of advanced PPC.

**Keywords:** Pleomorphic carcinoma, Chemotherapy, Gefitinib, EGFR mutations

## Background

Pulmonary pleomorphic carcinoma (PPC) is rare, with an incidence of 0.1–0.4 % of all non-small lung cancers (NSCLC) [1–5]. According to the World Health

Organization classification report in 2004 [4], pulmonary pleomorphic carcinoma is defined as poorly differentiated adenocarcinoma, squamous cell carcinoma or large cell carcinoma, containing a component of spindle or giant cells with a sarcomatoid tumor component of at least 10 % [4]. Although clinical outcome is stage-dependent, it follows a more aggressive clinical course and has a worse prognosis than other histological types of NSCLC [6–10]. Furthermore, some recent reports

\*Correspondence: fu\_ji\_@yahoo.co.jp; yutakafu@ncc.go.jp

<sup>1</sup> Department of Thoracic Oncology, National Cancer Center Hospital, Tsukiji 5-1-1, Chuo-ku, Tokyo 104-0045, Japan

Full list of author information is available at the end of the article

have noted that PPC is often refractory to chemotherapy regimens which provide active treatment for NSCLC [8–12]. Due to its rarity, no optimal treatment for PPC has yet been established.

In NSCLC, the discovery that somatic alterations of driver gene, including *epidermal growth factor receptor (EGFR)* and *anaplastic large kinase (ALK)* gene, are found in a subset of lung adenocarcinomas and are associated with sensitivity to molecular target therapy has provided a rationale for the development of therapies in NSCLC [13–15]. Several reports noted that *EGFR* mutations were recognized in 15–20 % of patients with PPC but that the response to *EGFR* tyrosine kinase receptor inhibitor (TKI) was weak and transient as a consequence of tumor heterogeneity [8, 10, 11, 16–18].

Here, we retrospectively analyzed the efficacy of chemotherapy and molecular targeted therapy in patients with advanced or metastatic PPC, and characterized their somatic alteration status, particularly for *EGFR* mutation, *K-ras* mutation, and *ALK* immunohistochemistry (IHC).

## Patients and methods

### Patient selection

PPC was diagnosed according to the 2004 World Health Organization classification [4]. Diagnoses were based on light microscopy findings and confirmed by IHC examination. The histological diagnosis was reviewed by one of the authors (K.T.). From January 1998 to April 2010, 65 patients were histologically diagnosed with PPC by surgical resection, transbronchial lung biopsy, or computed tomography (CT) guided needle biopsy at our institution. Of these 65, 13 had received chemotherapy and 3 had received concurrent chemoradiotherapy, giving a total of 16 consecutive patients for final enrollment as subjects of this study. The protocol was approved by the institutional review board of National Cancer Centre Hospital and we reviewed the medical records of all of these patients.

### EGFR mutation, KRAS mutation, and ALK-IHC analysis

Activating *EGFR* mutations (i.e., exon 19 in-frame deletion and exon 21 L858 R missense mutations) and *KRAS* mutation in exon 2 (codon 12 and codon 13) were examined in paraffin-embedded tumor specimens by high-resolution melting assay using LCGreen (Idaho Technology) on a LightCycler (Roche Diagnostics), as previously described [19]. These PCR products were denatured at 95 °C for 10 min and cooled to 40 °C to promote the formation of heteroduplexes. The LightCycler capillary was transferred to an HR-1 (Idaho Technology), an high-resolution melting assay instrument, and heated at a transition rate of 0.3 °C/s. Data were acquired and analyzed using the accompanying software (Idaho Technology). After normalization and temperature-adjustment steps,

melting curve shapes from 78.5 to 85.5 °C were compared between the tumor samples and control samples. Human Genomic DNA (Roche Diagnostics) was used as the negative control sample with wild-type *EGFR*. Samples revealing skewed or left-shifted curves as compared with the control samples were judged to have mutations without positive controls.

*ALK* gene fusions were analyzed by immunohistochemistry. Four-micrometer-thick sections were deparaffinized. Heat-induced epitope retrieval was performed with targeted retrieval solution (pH 9) (Dako, Carpinteria, CA). The slides were then incubated with primary antibodies against *ALK* protein (1:40, 5A4; Abcam, Cambridge, UK) for 30 min at room temperature. Immunoreactions were detected using the EnVision-FLEX and LINKER (Dako). The reactions were visualized with 3,3'-diaminobenzidine, followed by counterstaining with hematoxylin.

To evaluate the genetic heterogeneity of PPC, we also investigated *EGFR* IHC in two different histological types. For immunohistochemical staining, formalin-fixed, paraffin-embedded tissues were cut into 4- $\mu$ m-thick sections and deparaffinized, then subject to heat-induced epitope retrieval with Target Retrieval Solution (Dako, Carpinteria, CA, USA). The primary antibody used was a rabbit monoclonal antibody against human *EGFR* with the DEL (E746-A750del) mutation (1:100, clone 6B6, Cell Signaling Technology, Danvers, MA, USA) and a rabbit monoclonal antibody against human *EGFR* with the L858R mutation (1:200, clone 43B2, Cell Signaling Technology) [20]. Antibodies were diluted in SignalStain (Cell Signaling Technology) and the slides were incubated with each primary antibody for 1 h at room temperature. Immunoreactions were detected using the EnVision Plus system (Dako) and 3, 3'-diaminobenzidine, followed by counterstaining with hematoxylin.

### Assessment and analysis

Clinical information was obtained from medical records. Clinical disease staging was reassessed according to the latest International Union Against Cancer staging criteria [21]. Response to chemotherapy and survival were assessed retrospectively and classified according to the Response Evaluation Criteria for Solid Tumors, version 1.1 [22]. Progression-free survival (PFS) was defined as the time from the first day of chemotherapy to detection of the earliest signs of disease progression or death from any cause. Overall survival (OS) was defined as the time from the first day of chemotherapy to the last day on which the patient was confirmed to be alive or dead from any cause. Survival was estimated using the Kaplan–Meier method. Fisher's exact and  $\chi^2$  test was used to examine the association of two categorical

variables. Differences with probability values of  $<0.05$  were considered statistically significant. STATA version 12 (StataCorp LP, College Station, TX, USA) was used for all analyses.

## Results

### Patient characteristics

Clinical characteristics of the 16 patients who were finally enrolled are listed in Table 1. Median age was 61 years (range 43–77 years). Ten patients (62.5 %) were male and six (37.5 %) were female. Twelve patients (75.0 %) were ex-smokers and their median pack-years was 45.5 (range 17–124). Ten patients (62.5 %) had relapsed after curative surgery, four (25.0 %) were initially diagnosed

**Table 1 Patient characteristics**

Characteristic	Number of patients (n = 16)
Sex	
Male	10 (62.5 %)
Female	6 (37.5 %)
Age (years)	
Median (range)	61 (43–77)
ECOG-PS	
0	3 (18.8 %)
1	10 (62.5 %)
2	3 (18.8 %)
Smoking status	
Never smoker	4 (25.0 %)
Ex-smoker	12 (75.0 %)
Pack-years <sup>a</sup>	
Median (range)	45.5 (17–124)
Clinical stage	
IIIA	2 (12.5 %)
IV	4 (25.0 %)
Recurrence	10 (62.5 %)
Diagnostic procedure	
Surgery	10 (62.5 %)
CT-NB	3 (18.8 %)
Autopsy	3 (18.8 %)
Pathological features	
Epithelial component	
Adenocarcinoma	7 (43.8 %)
Squamous cell carcinoma	2 (12.5 %)
Adenosquamous carcinoma	1 (6.3 %)
Large cell carcinoma	4 (25.0 %)
NOS	2 (12.5 %)
Sarcomatoid component	
Spindle cell	0 (0.0 %)
Giant cell	2 (12.5 %)
Spindle cell and giant cell	14 (62.5 %)

CT-NB CT-guided needle biopsy, NOS not otherwise specified

<sup>a</sup> Ex-smoker (n = 12)

with advanced disease at stage IV, and two (12.5 %) were diagnosed with locally advanced disease at stage IIIA. Among the relapsed patients who had undergone curative surgery, none had received adjuvant chemotherapy. Two patients with stage IIIA disease and one who had relapse of mediastinal and supraclavicular lymph node metastases received concurrent chemoradiotherapy. Thirteen patients (81.3 %) received systemic chemotherapy, including cytotoxic agents or molecular targeted agents. Ten patients were diagnosed by the resected primary tumor; of the other six, three were diagnosed by CT guided needle biopsy and three by autopsy.

### Pathological features

On histologic review of the malignant epithelial component, adenocarcinoma was identified in seven cases (43.8 %), large cell carcinoma in four (25.0 %), squamous cell carcinoma in two (12.5 %), NSCLC in two (12.5 %), and adenosquamous carcinoma in one (6.3 %). For the sarcomatoid component, two cases (12.5 %) had giant cell tumors. Of the 14 cases (87.5 %) who had both spindle cell tumors and giant cell tumors, the spindle cell tumor was dominant in nine (56.3 %) while the giant cell was dominant in five (31.3 %).

### Molecular profile

*EGFR* mutation, *KRAS* mutation and ALK-IHC were investigated in the 14 patients whose tumor specimens were available (Table 2). *EGFR* mutation was observed in 2 (14.3 %) of these 14 patients. The histological features of the patient harboring *EGFR* exon 19 deletion was adenosquamous carcinoma with spindle cell and giant cell tumor and that of the patient harboring *EGFR* L858R mutation in exon 21 was large cell carcinoma with spindle cell and giant cell tumor. *KRAS* mutation was observed in three patients (21.4 %). Two patients with *EGFR* mutation were never smoker, while all patients with *KRAS* mutation were ex-smokers. No patient was positive for ALK-IHC.

Next, regarding the two cases harboring *EGFR* mutation, we evaluated the mutated EGFR protein expression using a mutation-specific antibody against *EGFR* mutations in both the epithelial and sarcomatoid components. In patient No. 2, we found that IHCs by mutation-specific antibody were positive in adenocarcinoma (Fig. 1a), squamous cell carcinoma (Fig. 1b), and sarcomatoid components (Fig. 1c). And patient No. 15 progressed after concurrent chemoradiotherapy and so we could not check the mutated EGFR protein expression in both the epithelial and sarcomatoid components.

### Treatment and efficacy

Of the 13 patients with advanced stage disease, 11 patients received cytotoxic chemotherapy as first-line chemotherapy. Among them, however, no patient

**Table 2 Association between pathological findings and molecular profile**

No.	Sex	Diagnostic procedure	Smoking index	EGFR mutation	KRAS mutation	ALK IHC	Pathological features	
							Epithelial component	Sarcomatoid component
1	M	Surgery	2100	Wild	Mutated	Negative	Adeno	Giant cell > Spindle cell
2	F	Surgery	0	Exon 19 del	Wild	Negative	Adenosquamous	Spindle cell > Giant cell
3	M	Surgery	1200	Wild	Wild	Negative	Adeno	Spindle cell > Giant cell
4	F	Surgery	0	Wild	Wild	Negative	Adeno	Spindle cell > Giant cell
5	M	Surgery	400	Wild	Wild	Negative	Adeno	Spindle cell > Giant cell
6	M	Surgery	1800	Wild	Wild	Negative	Squamous	Spindle cell > Giant cell
7	F	Surgery	600	Wild	Wild	Negative	Adeno	Spindle cell > Giant cell
8	F	Surgery	345	Wild	Mutated	Negative	Large	Giant cell > Spindle cell
9	M	Autopsy	495	NA	NA	NA	NOS	Giant cell > Spindle cell
10	M	Biopsy	2480	Wild	Wild	Negative	NOS	Giant cell
11	M	Autopsy	480	Wild	Wild	Negative	Adeno	Giant cell
12	M	Biopsy	1600	Wild	Mutated	Negative	Squamous	Spindle cell > Giant cell
13	M	Surgery	660	Wild	Wild	Negative	Large	Giant cell > Spindle cell
14	M	Autopsy	1160	Wild	Wild	Negative	Adeno	Giant cell > Spindle cell
15	F	Surgery	0	Exon 21 L858R	Wild	Negative	Large	Spindle cell > Giant cell
16	F	Biopsy	0	NA	NA	NA	Large	Spindle cell > Giant cell

IHC immunohistochemistry, NOS not otherwise specified, Adeno adenocarcinoma, Squamous squamous cell carcinoma, Large large cell carcinoma, Adenosquamous adenosquamous carcinoma

achieved an objective response, except one patient (No. 6) who received docetaxel as second-line chemotherapy and achieved a partial response. In all patients, median PFS for first-line chemotherapy was 1.5 (95 % CI 0.6–2.5) months and OS was 7.2 (95 % CI 1.4–10.3) months (Table 3). We also identified one patient (No. 13) who achieved stable disease of about 9 years' duration without progression after undergoing small intestinal resection for ileus due to a postoperative recurrence lesion in the small intestine and then receiving four cycles of cisplatin and gemcitabine treatment for hilar lymph node and bone metastases. One patient (No. 2) harboring *EGFR* exon 19 deletion was treated with gefitinib after postoperative recurrence of mediastinal lymph node and achieved a complete response of about 35 months (Fig. 2). Two months after she declined further treatment with gefitinib because of hemoptysis, she developed progressive disease in a mediastinal lymph node and thoracic spine metastases. All three patients who received concurrent chemoradiotherapy with cisplatin plus vinorelbine achieved a partial response (Table 3). Although two patients had early recurrence, the third is alive without progression more than 5 years after completing chemoradiotherapy. One patient (No. 15) harboring *EGFR* exon 21 point mutation developed multiple brain metastases and carcinomatous meningitis immediately after chemoradiotherapy and was then treated with best supportive care without EGFR-TKI because of poor general condition.

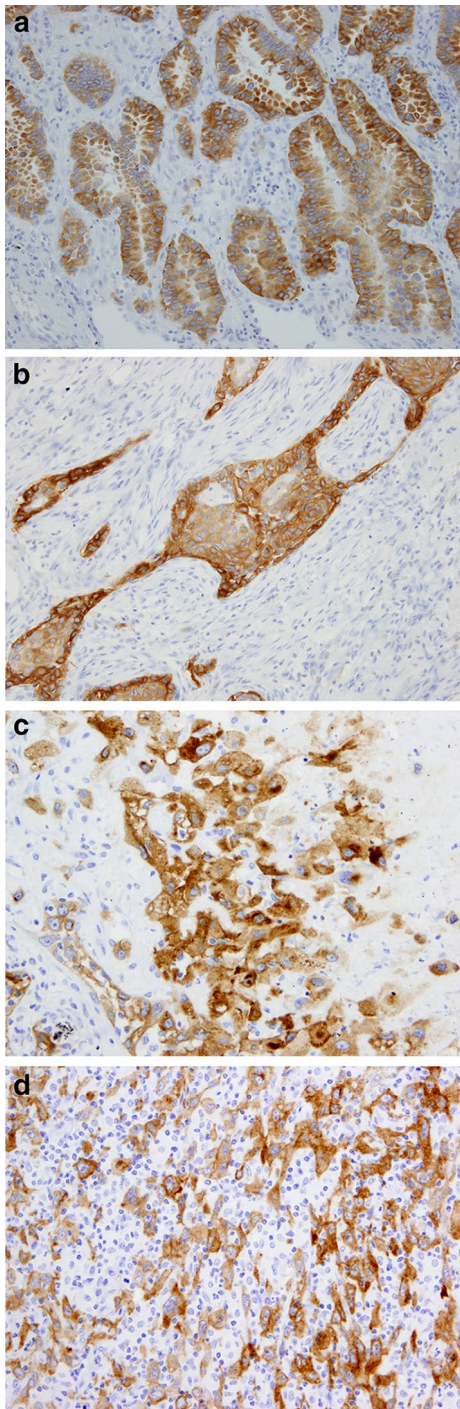
## Discussion

Previous retrospective studies and case reports suggested that PPC is often refractory to the chemotherapy regimens used in active treatment for NSCLC [8–11]. This retrospective study also found that PPC is an aggressive tumor associated with high cell proliferation and that palliative chemotherapy is associated with a poor response in advanced PPC, with a few notable exceptions.

With regard to chemoradiotherapy for locally advanced PPC, all three patients achieved a partial response in our study. Although two patients had early recurrence, the third is alive without progression more than 5 years after completing chemoradiotherapy. Some reports revealed that PPC treated with chemoradiotherapy achieved an objective response without recurrence [10, 11]. These results if confirmed suggest that chemoradiotherapy commonly used for NSCLC should be administered in unresectable stage III disease with pleomorphic carcinoma.

Several recent reports have described cases of PPC that responded to cytotoxic chemotherapy containing platinum and gemcitabine [8–12, 23]. Tamiya et al. mentioned that high expression of human equilibrative nucleoside transporter 1 (hENT1), the major transporter of gemcitabine, might be associated with high sensitivity to gemcitabine in PPC [12]. We also experienced one patient who achieved long-term stable disease without progression after receiving cisplatin and gemcitabine





**Fig. 1** Two representative cases harboring *EGFR* mutation by mutation-specific antibody against *EGFR* mutations in both epithelial and sarcomatoid components. **a** adenocarcinoma component in patient No. 2,  $\times 20$ ; **b** squamous cell carcinoma component in patient No. 2,  $\times 20$ ; **c** sarcomatoid component in patient No. 2,  $\times 20$ ; **d** sarcomatoid component in patient No. 15,  $\times 20$

treatment. We propose that cisplatin and gemcitabine treatment may be an active chemotherapy for PPC.

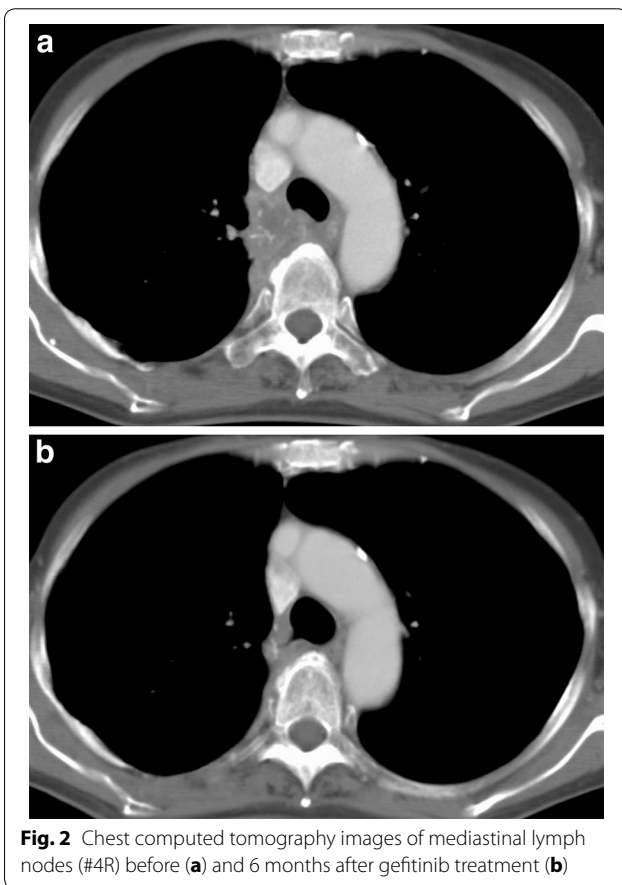
In this study, we also investigated *EGFR* mutation, *KRAS* mutation and ALK-IHC in the 14 patients with PPC whose tumor specimens were available. We found that two (14.3 %) of these patients harbored *EGFR* mutation. One patient treated with gefitinib achieved a complete response, which was moreover sustained for about 35 months. Previous reports suggested that the incidence of *EGFR* mutation was about 15–20 % and that the response to gefitinib was weak and transient [8, 10, 11, 16–18]. Kaira et al. independently investigated *EGFR* mutations in both the adenocarcinomatous and sarcomatoid components of three patients with *EGFR* mutation and detected *EGFR* mutations in the adenocarcinomatous component but not in the sarcomatoid component in all cases. Ushiki et al. revealed a case of PPC whose adenocarcinoma cells had an exon 19 deletion and whose sarcomatous cells had both the deletion 19 and 20 T790 M *EGFR* mutations [16]. In our present study, we could not clearly separate epithelial tumor cells from sarcomatoid tumor cells because tumor tissue consisted of a mixture of both components. We then investigated IHC by mutated *EGFR*-specific antibody in the two different histological types to evaluate the genetic heterogeneity of PPC. We found that mutated *EGFR* protein expression was positive in both components. We consider that our results are unlikely to be false positives, because mutation-specific antibodies against *EGFR* mutation have high specificity in spite of low sensitivity [20]. Tumorigenesis in lung cancer is known to be a multistage process by which monoclonal cancer cells gradually become heterogeneous owing to clonal evolution and genetic/epigenetic instability [24–27]. Applying computational analysis to the deep sequencing data of NSCLC samples, Govindan et al. suggested that *EGFR* mutation might be acquired at the very initial phase of tumorigenesis [28]. We consider that the difference in the *EGFR* mutational heterogeneity of PPC between the epithelial and sarcomatoid components represents the point at which clonal evolution occurred. Additionally, our results also suggest that driver gene alteration such as *EGFR* should be investigated in the treatment of advanced PPC.

One limitation of our study is that the sample size was small, due to the rarity of this condition. Additionally, 10 of 16 patients diagnosed from the resected primary tumor did not undergo rebiopsy at the start of chemotherapy. For this reason, we did not attempt to identify which component of PPC relapsed.

**Table 3 Treatment results by systemic chemotherapy and chemoradiotherapy**

No.	Sex	Age	Stage	PS	EGFR mutation status	Initial treatment	OR	PFS (mos)	OS (mos)	Outcome
1	M	55	Relapsed	1	Wild	DTX	PD	0.7	7.3	Died
2	F	69	Relapsed	1	Exon 19 del	Gefitinib	CR	35.1	53.9	Died
3	M	60	Relapsed	1	Wild	CBDCA + PTX	PD	0.9	3.7	Died
4	F	45	Relapsed	0	Wild	Gefitinib	PD	1.7	10.7	Died
5	M	63	Relapsed	1	Wild	CBDCA + PTX	PD	0.6	12.7	Died
6	M	62	Relapsed	1	Wild	CDDP + GEM	PD	2.5	18.7	Died
7	F	53	Relapsed	2	Wild	CBDCA + PTX	PD	0.4	1	Died
8	F	55	Relapsed	1	Wild	DTX	PD	0.7	1.4	Died
9	M	56	Advanced	1	NA	CBDCA + PTX	PD	0.6	1.0	Died
10	M	77	Advanced	2	Wild	CBDCA + ETP	PD	1.5	7.2	Died
11	M	43	Advanced	1	Wild	CBDCA + PTX	SD	4.5	10.3	Died
12	M	62	Advanced	2	Wild	CBDCA + PTX	NE	0.4	0.4	Died
13	M	56	Relapsed	0	Wild	CDDP + GEM	NE	109.2	109.2	Alive
14	M	65	Stage IIIA	1	Wild	CDDP + VNR + TRT	PR	5.0	6.6	Died
15	F	66	Relapsed	1	Exon 21 L858R	CDDP + VNR + TRT	PR	3.9	6.9	Died
16	F	66	Stage IIIA	0	NA	CDDP + VNR + TRT	PR	65.4	65.4	Alive

PS performance status, OR overall response, PFS progression-free survival, OS overall survival, DTX docetaxel, CBDCA carboplatin, PTX paclitaxel, CDDP cisplatin, GEM gemcitabine, ETP etoposide, VNR vinorelbine, TRT thoracic radiotherapy, SD stable disease, CR complete response, PD progressive disease, NE not evaluable, PR partial response



**Fig. 2** Chest computed tomography images of mediastinal lymph nodes (#4R) before (a) and 6 months after gefitinib treatment (b)

**Conclusions**

All the patients who received concurrent chemoradiotherapy achieved at least a partial response and if confirmed, chemoradiotherapy should be considered an effective modality in locally advanced disease. Although this study demonstrated that advanced PPC responds poorly to chemotherapy, further clinical trials are needed to investigate the role of palliative chemotherapy for PPC, including platinum and gemcitabine treatment. Additionally, one patient with EGFR mutation achieved a long-term complete response. We therefore recommend evaluating driver gene alteration, such as EGFR, in the treatment of advanced PPC.

**Abbreviations**

PPC: pulmonary pleomorphic carcinoma; NSCLC: non-small cell lung cancer; EGFR: epidermal growth factor receptor; ALK: anaplastic large kinase; TKI: tyrosine kinase receptor inhibitor; IHC: immunohistochemistry; CT: computed tomography; PFS: progression free survival; OS: overall survival.

**Authors' contributions**

YT, YF, NY, and HN designed the research, and YT, NY, HN, HH, SK, YO promoted the research. YT, YF, and HN analyzed the data, and YT, YF, EK, HN, SK, KT, and YO wrote the manuscript. All authors read and approved the final manuscript.

**Author details**

<sup>1</sup> Department of Thoracic Oncology, National Cancer Center Hospital, Tsukiji 5-1-1, Chuo-ku, Tokyo 104-0045, Japan. <sup>2</sup> Division of Internal Medicine, Osaka Medical College Hospital, 2-7 Daigakumachi, Takatsuki, Osaka 569-8686, Japan.

<sup>3</sup> Department of Experimental Therapeutics, Exploratory Oncology Research and Clinical Trial Center, National Cancer Center, Tsukiji 5-1-1, Chuo-ku, Tokyo 104-0045, Japan. <sup>4</sup> Department of Pathology, National Cancer Center Hospital, Tsukiji 5-1-1, Chuo-ku, Tokyo 104-0045, Japan.

#### Acknowledgements

We greatly appreciate the patients who participated in this study and their families. We also appreciate the assistance of the staff of the Department of Thoracic Oncology, National Cancer Center Hospital. The study sponsor had no involvement in the study design, collection, analysis and interpretation of data; in the writing of the manuscript; or in the decision to submit the manuscript for publication.

#### Competing interests

The authors declare that they have no competing interests.

Received: 25 November 2015 Accepted: 27 November 2015

Published online: 18 December 2015

#### References

- Fishback NF, Travis WD, Moran CA, Guinee DG Jr, McCarthy WF, Koss MN. Pleomorphic (spindle/giant cell) carcinoma of the lung. A clinicopathologic correlation of 78 cases. *Cancer*. 1994;73(12):2936–45.
- Brambilla E, Travis WD, Colby TV, Corrin B, Shimosato Y. The new World Health Organization classification of lung tumours. *Eur Respir J*. 2001;18(6):1059–68.
- Travis WD. Pathology of lung cancer. *Clin Chest Med*. 2002;23(1):65–81.
- Travis WD, Brambilla E, Muller-Hermelink HK, Harris CC. Pathology and genetics of tumours of the lung, pleura, thymus and heart. Lyon: International Agency for Research on Cancer Press; 2004.
- Beasley MB, Brambilla E, Travis WD. The 2004 World Health Organization classification of lung tumors. *Semin Roentgenol*. 2005;40(2):90–7.
- Chang YL, Lee YC, Shih JY, Wu CT. Pulmonary pleomorphic (spindle) cell carcinoma: peculiar clinicopathologic manifestations different from ordinary non-small cell carcinoma. *Lung Cancer*. 2001;34(1):91–7.
- Mochizuki T, Ishii G, Nagai K, et al. Pleomorphic carcinoma of the lung: clinicopathologic characteristics of 70 cases. *Am J Surg Pathol*. 2008;32(11):1727–35.
- Bae HM, Min HS, Lee SH, et al. Palliative chemotherapy for pulmonary pleomorphic carcinoma. *Lung Cancer*. 2007;58(1):112–5.
- Hong JY, Choi MK, Uhm JE, et al. The role of palliative chemotherapy for advanced pulmonary pleomorphic carcinoma. *Med Oncol*. 2009;26(3):287–91.
- Ito K, Oizumi S, Fukumoto S, et al. Clinical characteristics of pleomorphic carcinoma of the lung. *Lung Cancer*. 2010;68(2):204–10.
- Kaira K, Horie Y, Ayabe E, et al. Pulmonary pleomorphic carcinoma: a clinicopathological study including EGFR mutation analysis. *J Thorac Oncol*. 2010;5(4):460–5.
- Tamiya A, Asami K, Shimizu S, et al. Long-term complete response in a patient with disseminated pulmonary pleomorphic carcinoma induced by cisplatin and gemcitabine. *Intern Med*. 2014;53(22):2625–8.
- Azzoli CG, Temin S, Aliff T, et al. 2011 Focused Update of 2009 American Society of Clinical Oncology clinical practice guideline update on chemotherapy for stage IV non-small-cell lung cancer. *J Clin Oncol*. 2011;29(28):3825–31.
- Reck M, Popat S, Reinmuth N et al. Metastatic non-small-cell lung cancer (NSCLC): ESMO clinical practice guidelines for diagnosis, treatment and follow-up. *Ann Oncol*. 2014;25 Suppl 3:iii27–39.
- Solomon BJ, Mok T, Kim DW, et al. First-line crizotinib versus chemotherapy in ALK-positive lung cancer. *N Engl J Med*. 2014;371(23):2167–77.
- Ushiki A, Koizumi T, Kobayashi N, et al. Genetic heterogeneity of EGFR mutation in pleomorphic carcinoma of the lung: response to gefitinib and clinical outcome. *Jpn J Clin Oncol*. 2009;39(4):267–70.
- Saitoh M, Niiijima M, Takiguchi Y, et al. An early event of EGFR mutation in pleomorphic carcinoma of the lung. *Int J Clin Oncol*. 2011;16(6):770–3.
- Lee S, Kim Y, Sun JM, et al. Molecular profiles of EGFR, K-ras, c-met, and FGFR in pulmonary pleomorphic carcinoma, a rare lung malignancy. *J Cancer Res Clin Oncol*. 2011;137(8):1203–11.
- Fukui T, Ohe Y, Tsuta K, et al. Prospective study of the accuracy of EGFR mutational analysis by high-resolution melting analysis in small samples obtained from patients with non-small cell lung cancer. *Clin Cancer Res*. 2008;14(15):4751–7.
- Bondgaard AL, Hogdall E, Mellemegaard A, Skov BG. High specificity but low sensitivity of mutation-specific antibodies against EGFR mutations in non-small-cell lung cancer. *Mod Pathol*. 2014;27(12):1590–8.
- Sobin LH, Gospodarowicz M, Wittekind C, editors. TNM classification of malignant tumors. 7th ed. Oxford: Wiley; 2009.
- Eisenhauer EA, Therasse P, Bogaerts J, et al. New response evaluation criteria in solid tumours: revised RECIST guideline (version 1.1). *Eur J Cancer*. 2009;45(2):228–47.
- Yamanashi K, Marumo S, Miura K, Kawashima M. Long-term survival in a case of pleomorphic carcinoma with a brain metastasis. *Case Rep Oncol*. 2014;7(3):799–803.
- Nowell PC. Mechanisms of tumor progression. *Cancer Res*. 1986;46(5):2203–7.
- Greaves M, Maley CC. Clonal evolution in cancer. *Nature*. 2012;481(7381):306–13.
- de Bruin EC, McGranahan N, Mitter R, et al. Spatial and temporal diversity in genomic instability processes defines lung cancer evolution. *Science*. 2014;346(6206):251–6.
- Zhang J, Fujimoto J, Zhang J, et al. Intratumor heterogeneity in localized lung adenocarcinomas delineated by multiregion sequencing. *Science*. 2014;346(6206):256–9.
- Govindan R, Ding L, Griffith M, et al. Genomic landscape of non-small cell lung cancer in smokers and never-smokers. *Cell*. 2012;150(6):1121–34.

Submit your next manuscript to BioMed Central and we will help you at every step:

- We accept pre-submission inquiries
- Our selector tool helps you to find the most relevant journal
- We provide round the clock customer support
- Convenient online submission
- Thorough peer review
- Inclusion in PubMed and all major indexing services
- Maximum visibility for your research

Submit your manuscript at  
www.biomedcentral.com/submit

