

RESEARCH NOTE

Open Access



The whole blood phagocytosis assay: a clinically relevant test of neutrophil function and dysfunction in community-acquired pneumonia

J. Reiné^{1*}, J. Rylance^{1,4†}, D. M. Ferreira¹, S. H. Pennington¹, I. D. Welters², R. Parker³ and B. Morton^{1,3,4}

Abstract

Objective: To refine and validate a neutrophil function assay with clinical relevance for patients with community-acquired pneumonia (CAP).

Design: Two phase cross-sectional study to standardise and refine the assay in blood from healthy volunteers and test neutrophil phagocytic function in hospital patients with CAP.

Participants: Phase one: Healthy adult volunteers (n = 30). Phase two: Critical care patients with severe CAP (n = 16), ward-level patients with moderate CAP (n = 15) and respiratory outpatients (no acute disease, n = 15).

Results: Our full standard operating procedure for the assay is provided. Patients with severe CAP had significantly decreased neutrophil function compared to moderate severity disease (median phagocytic index 2.8 vs. 18.0, $p = 0.014$). Moderate severity pneumonia neutrophil function was significantly higher than control samples (median 18.0 vs. 1.6, $p = 0.015$). There was no significant difference between critical care and control neutrophil function (median 2.8 vs. 1.6, $p = 0.752$).

Conclusions: Our whole blood neutrophil assay is simple, reproducible and clinically relevant. Changes in neutrophil function measured in this pneumonia cohort is in agreement with previous studies. The assay has potential to be used to identify individuals for clinical trials of immunomodulatory therapies, to risk-stratify patients with pneumonia, and to refine our understanding of 'normal' neutrophil function in infection.

Keywords: Neutrophils, Sepsis, Flow cytometry, Phagocytosis, Pneumonia

Introduction

Community-acquired pneumonia (CAP) is a major cause of morbidity and mortality. Disease results from both the bacterial infection, and the ensuing inflammatory host response, which, during early infection, is dominated by neutrophils. Neutrophil dysfunction is well recognised

in patients with CAP and sepsis [1, 2]. Currently, there are no clinically validated laboratory tests of neutrophil function; this limits the development and testing of potential immunomodulatory therapies [3]. Personalised approaches to immunomodulatory drug administration could enhance positive outcomes and reduce the risk of potentially harmful adverse-effects [2]. We aimed to refine and validate a flow-cytometric whole blood assay of neutrophil phagocytic function using intraphagosomal reporter beads [4, 5]. Potential advantages of this assay are direct measurement of relevant biological activity,

*Correspondence: Jesus.Reine@lstm.ac.uk

†J. Reiné and J. Rylance—joint first author

¹ Clinical Sciences Department, Liverpool School of Tropical Medicine (LSTM), Liverpool, UK

Full list of author information is available at the end of the article



minimal sample processing and the potential to become a 'near-patient' test with sample to result time of less than 4 h.

Main text

Methods

We recruited healthy volunteers and hospital patients in a two-phase study. The North West-Haydock Research Ethics Service (UK) approved this study (15/NW/0869). In phase one, we refined our standard operating procedure (SOP) using blood from healthy adult (>18 years old) volunteers. In phase two, we recruited adult patients within 48 h of diagnosis of severe and moderate CAP ($n=16$; defined by NICE guidelines, CG191: 2014 [6] who were admitted to critical and ward level care respectively ($n=15$). A control group of outpatients with chronic stable respiratory disease (no acute inflammatory disease, $n=15$) were recruited for comparative purposes (July 2016–April 2017). Hospital patients were recruited from Aintree University Hospital and Royal Liverpool University Hospital, Liverpool, United Kingdom. Participants were excluded if diagnosed with an immunocompromising condition or therapy (including HIV infection, malignancy and long term (>2 weeks) corticosteroid treatment), pregnant, requiring renal replacement therapy, unable to provide informed consent.

Citrated blood samples were transported to the laboratory and processed within 2 h of venepuncture. Finalised methods for the whole blood phagocytosis assay were refined based on previously published work [4, 5]. Samples were acquired using a BD LSR II flow cytometer equipped with three lasers (405, 488, and 633 nm; Becton–Dickinson, USA), using compensation matrices derived from commercial beads (Becton–Dickinson, USA). Data were acquired using FACS Diva software (version 6.1, BD Biosciences, USA) and analysed using FlowJo software (version 10, Tree Star, USA). A sequential gating strategy was used to identify the neutrophil according to light scatter and the expression of CD16 (Additional file 1: Figure S1). Neutrophil oxidation ratio (OR) was calculated as the mean fluorescence intensity (MFI) of the reporter fluorophore (FITC) divided by the MFI of the calibrator fluorophore (Pacific Blue). To confirm the interaction of blood neutrophils and the intraphagosomal reporter beads during the assay, illustrative confocal images and time-lapse video were also provided in Additional file 1: Figure S2, Video S1; Additional file 2.

Neutrophil phagocytic index (PI) was calculated as the number of neutrophils associated with reporter beads divided the total neutrophil number multiplied by the OR (Additional file 1: Figure S1). Statistical analysis was performed using Stata 13.1 for Mac (StataCorp LP, 2015); data were tested for normality using the Shapiro–Wilk

test and analysed using parametric and non-parametric tests, as appropriate.

Results

We analysed whole blood samples from 16 patients with severe CAP admitted to critical care, 15 patients with moderate severity CAP admitted to hospital wards and 15 patients with chronic, non-inflammatory and stable respiratory disease. Patient demographics, illness severity, microbiological status and outcome data were also recorded (Table 1). Median venepuncture to result (completed sample acquisition) time was 305 (IQR 261–328) min, including median 91 (IQR 49–118) min transport time between sampling and arrival in the laboratory. There were 45 min hands on time (i.e. pre-analytical interaction, reagent and sample preparation and loading, in-process interaction, post-analytical interaction and maintenance), per patient (sample batching promoted reductions).

Neutrophil phagocytic index (PI) was significantly higher in unstimulated blood samples taken from ward patients (moderate pneumonia) compared to critical care (severe pneumonia) patients [median 18.0 (IQR=3.0–48.7) vs. 2.8 (IQR=2.8–9.3) $p=0.014$] and outpatients [median 18.0 vs. 1.6 (IQR=0.7–12.0), $p=0.015$]. However, there was no significant difference between critical care and outpatients (Fig. 1a; median 2.8 vs. 1.6, $p=0.752$). For each group, PI value was significantly increased after neutrophil stimulation with phorbol myristate acetate (PMA) and lipopolysaccharide (LPS) (Fig. 1d–f). However, response to these positive controls was attenuated in critical care compared to ward patients. (Figure 1b, c) suggesting reduced maximal responses in the former group.

Discussion

We present a refined flow cytometry assay [5], clinically relevant method for measuring neutrophil function in blood taken from patients with CAP *ex vivo*. Our technique avoids pre-processing of blood, is simple to perform and reproducible. It directly measures phagocytic association with, and oxidation of neutrophils (representative of host/pathogen interaction) and can deliver results within 4 h of venepuncture. This assay can detect attenuated phagocytic function in patients with severe compared to mild-moderate community acquired pneumonia.

Pneumonia is the most frequent source of sepsis requiring critical care admission and induces disproportionate rates of mortality and morbidity compared to other severe infections [7]. In light of increasing antimicrobial resistance, there is increased pressure to investigate potential immunomodulatory agents, such as

Table 1 Clinical findings of ITU and ward patients in comparison to healthy control

	ITU (n = 16)	Ward (n = 15)	Outpatient (n = 15)
Female	9	9	9
Age ^a	57 (38–68)	64 (38–80)	49 (43–63)
SOFA ^b	9 (4–12)	1 (0–3)	N/A
CURB-65 ^b	3 (3–4)	3 (1–4)	N/A
Mortality (28 day)	2	0	0
Hospital LOS	18 (9–26)	6 (2–11)	N/A
ICU LOS	10 (4–17)	N/A	N/A
Respiratory support	Invasive ventilation = 11 Face mask CPAP = 3 Face mask high flow = 2	Room air = 11 Nasal specs = 4	Room air = 15
Microbiology	No growth = 9 <i>S. pneumoniae</i> = 3 <i>E. coli</i> = 1 Influenza = 1 Metapneumovirus = 2	No growth = 15	N/A
Beta-lactam antibiotic (glycopeptide synthase inhibitor if penicillin allergic)	Benzylpenicillin = 4 Amoxicillin = 2 Tazocin = 9 Teicoplanin = 1	Benzylpenicillin = 9 Amoxicillin = 1 Tazocin = 4	N/A
Adjunct antibiotic	Clarithromycin = 13 Clindamycin = 1 Gentamicin = 1 Metronidazole = 1	Clarithromycin = 11 Ciprofloxacin = 1	
Antiviral	Osetamavir = 3	Osetamavir = 1	

ITU, severe sepsis patients; ward, sepsis patients; outpatient indicates healthy control; SOFA, sequential organ failure assessment score; CURB-65, pneumonia severity score based on confusion, urea nitrogen > 20 mg/dL, respiratory rate > 30 breaths/min, heart beat: Systolic BP < 90 mmHg or diastolic BP < or = 60 mmHg) and Age ≥ 65; ICU, intensive care unit; LOS; CPAP, continuous positive airway pressure; N/A, not applied

^a Median (range)

^b Median (25th–75th percentile)

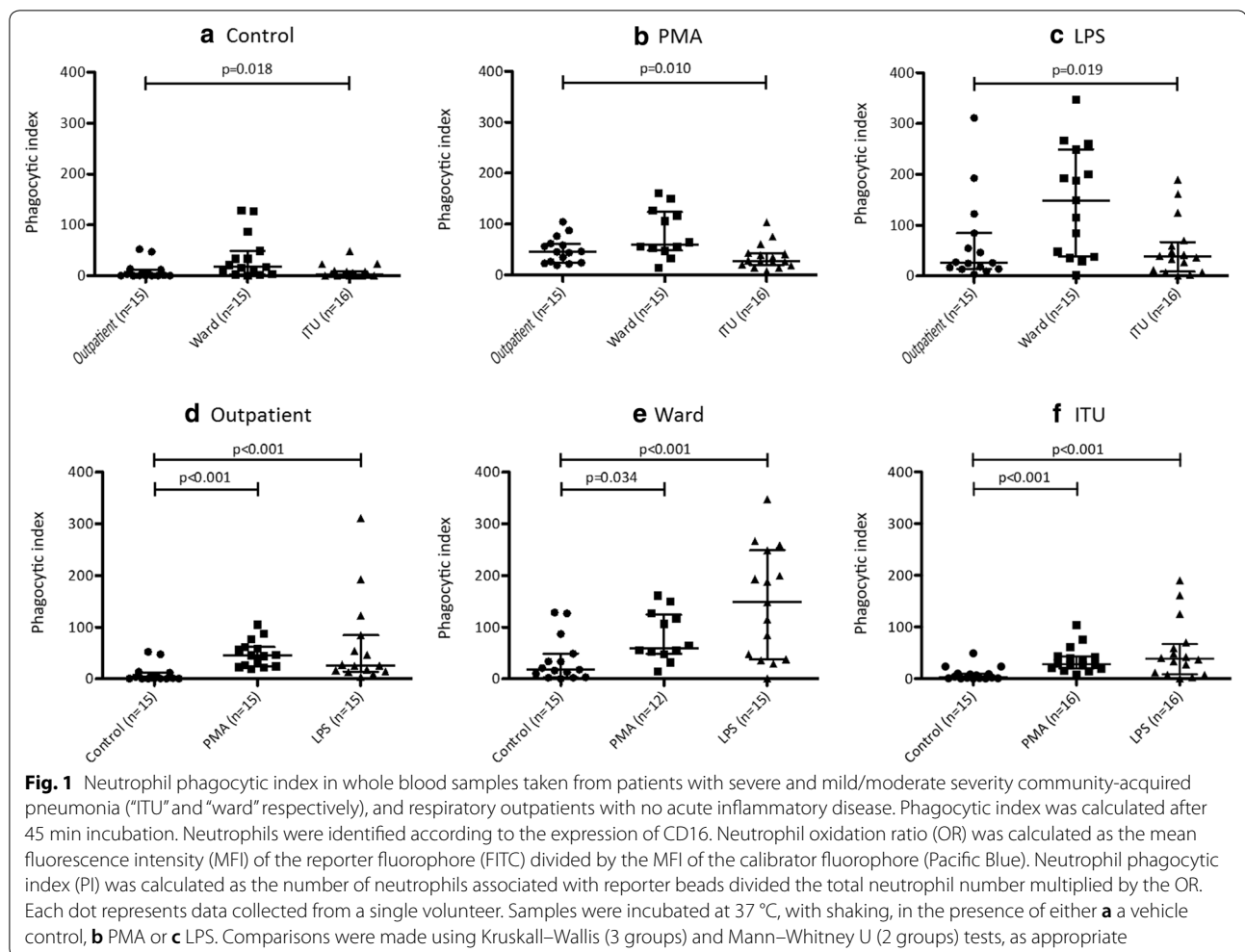
GM-CSF and interferon gamma [3], using a personalised approach to therapy [2]. To date, only indirect cell surface markers of phagocyte function have been employed in clinical trials [8]. Previously described zymosan neutrophil assays require cell purification (removing the inflammatory milieu) and are time consuming [9]. Other, recently described, whole blood functional assays exist [10]; however, these have not been studied in the context of sepsis. Direct comparison of these functional assays would be useful. Our approach promotes direct measurement of phagocytic function and will be used as the primary pharmacodynamic outcome measure for a planned first-in-human clinical trial with P4 peptide [5].

In summary, we present a simple, clinically relevant assay that can be used to measure neutrophil phagocytic function in patients who present clinically with community-acquired pneumonia. This approach has

the potential to be applied in a wider clinical context to measure neutrophil function in inflammatory disease and potentially direct immunomodulatory therapies.

Limitations

Due to the relatively small cohort size, we were unable to study factors predictive of poor neutrophil function (e.g. microbiological status), or relationship to patient outcomes. Future large-scale studies could assess these in cohorts suffering from pneumonia and undifferentiated sepsis disease states. Results could potentially be used to inform ‘normal-range’ neutrophil function and triage patient admission decisions (e.g. promote direct critical care admission) and/or direct targeted immunomodulatory therapies. Future investigations should seek to age-match outpatient controls to mitigate for this potential confounding factor in our study.



Supplementary information

Supplementary information accompanies this paper at <https://doi.org/10.1186/s13104-020-05034-0>.

Additional file 1. Figures S1–S2, Video S1 caption, and standard operation procedure.

Additional file 2. Video S1.

Abbreviations

CAP: Community-acquired pneumonia; MFI: Mean fluorescence intensity; OR: Oxidation ratio; PI: Phagocytic index; PMA: Phorbol-myristate-acetate; LPS: Lipopolysaccharide; PMT: Photomultiplier tubes.

Acknowledgements

The authors acknowledge the support of the research nurses based at Aintree University Hospital and the Royal Liverpool Hospital for patient recruitment and prospective clinical data collection: Sister Colette Jones-Criddle, Sister Karen Williams, Sister Anna Walker, Sister Victoria Waugh, Sister Julie Patrick-Hessleton, Sister Sam Hendry, and Charge Nurse David Shaw. Flow cytometry acquisition was performed on a BD LSR II cytometer funded by a Wellcome Trust Multi-User Equipment Grant (104936/Z/14/Z).

Authors' contributions

J Reiné, J Rylance, DF, SHP and BM contributed to conceiving, designing, performing and analysing experiments and writing of the paper. J Reiné, J Rylance, DF, SHP and BM contributed to conducting and analysing experiments. J Reiné, J Rylance and BM contributed to sample collection and/or design of the study. J Reiné, J Rylance, IDW, RP and BM contributed to conceiving and analysing the study and experiments. All authors read and approved the final manuscript.

Funding

This work was funded by Medical Research Council Confidence in Concept awarded to Dr Rylance, Dr Morton, Prof Ferreira and Dr Reiné. Dr Morton and Dr Rylance thank the NIHR Global Health Research Unit on Lung Health and TB in Africa at LSTM—“IMPALA” for helping to make this work possible. In relation to IMPALA (grant number 16/136/35) specifically: IMPALA was commissioned by the National Institute of Health Research using Official Development Assistance (ODA) funding. The views expressed in this publication are those of the author(s) and not necessarily those of the NHS, the National Institute for Health Research or the Department of Health.

Availability of data and materials

The datasets generated during and/or analysed during the current study are available from the corresponding author on reasonable request.

Ethics approval and consent to participate

We recruited healthy volunteers and hospital patients in a two-phase study. The North West-Haydock Research Ethics Service (UK) approved this study (15/NW/0869), and written consent was obtained for all participants.

Consent for publication

Not applicable.

Competing interests

All the authors declare non-financial competing interests.

Author details

¹ Clinical Sciences Department, Liverpool School of Tropical Medicine (LSTM), Liverpool, UK. ² Critical Care Department, Royal Liverpool University Hospital, Liverpool, UK. ³ Critical Care Department, Aintree University Hospital NHS Foundation Trust, Liverpool, UK. ⁴ Lung Health Group, Malawi Liverpool Wellcome Trust Clinical Research Programme, Queen Elizabeth Central Hospital, College of Medicine, P.O. BOX 30096, Chichiri, Blantyre, Malawi.

Received: 24 February 2020 Accepted: 19 March 2020

Published online: 08 April 2020

References

1. Fernandez-Botran R, Uriarte SM, Arnold FW, Rodriguez-Hernandez L, Rane MJ, Peyrani P, et al. Contrasting inflammatory responses in severe and non-severe community-acquired pneumonia. *Inflammation*. 2014;37(4):1158–66.
2. Hotchkiss RS, Monneret G, Payen D. Sepsis-induced immunosuppression: from cellular dysfunctions to immunotherapy. *Nat Rev Immunol*. 2013;13(12):862–74.
3. Morton B, Pennington SH, Gordon SB. Immunomodulatory adjuvant therapy in severe community-acquired pneumonia. *Expert Rev Respir Med*. 2014;8(5):587–96.
4. VanderVen BC, Yates RM, Russell DG. Intraphagosomal measurement of the magnitude and duration of the oxidative burst. *Traffic*. 2009;10(4):372–8.
5. Morton B, Mitsi E, Pennington SH, Reine J, Wright AD, Parker R, et al. Augmented passive immunotherapy with P4 peptide improves phagocyte activity in severe sepsis. *Shock (Augusta, Ga)*. 2016;46(6):635–41.
6. NICE. Pneumonia in adults: diagnosis and management; 2014. <https://www.nice.org.uk/guidance/cg191>. Accessed 22 Sept 2017.
7. Vincent JL, Rello J, Marshall J, Silva E, Anzueto A, Martin CD, et al. International study of the prevalence and outcomes of infection in intensive care units. *JAMA*. 2009;302(21):2323–9.
8. Meisel C, Schefold JC, Pschowski R, Baumann T, Hetzger K, Gregor J, et al. Granulocyte-macrophage colony-stimulating factor to reverse sepsis-associated immunosuppression: a double-blind, randomized, placebo-controlled multicenter trial. *Am J Respir Crit Care Med*. 2009;180(7):640–8.
9. Morris AC, Brittan M, Wilkinson TS, McAuley DF, Antonelli J, McCulloch C, et al. C5a-mediated neutrophil dysfunction is RhoA-dependent and predicts infection in critically ill patients. *Blood*. 2011;117(19):5178–88.
10. Gupta-Wright A, Tembo D, Jambo KC, Chimbayo E, Mvaya L, Caldwell S, et al. Functional analysis of phagocyte activity in whole blood from HIV/tuberculosis-infected individuals using a novel flow cytometry-based assay. *Front Immunol*. 2017;8:1222.

Publisher's Note

Springer Nature remains neutral with regard to jurisdictional claims in published maps and institutional affiliations.

Ready to submit your research? Choose BMC and benefit from:

- fast, convenient online submission
- thorough peer review by experienced researchers in your field
- rapid publication on acceptance
- support for research data, including large and complex data types
- gold Open Access which fosters wider collaboration and increased citations
- maximum visibility for your research: over 100M website views per year

At BMC, research is always in progress.

Learn more biomedcentral.com/submissions

