

SHORT REPORT

Open Access

# Development and characterization of highly polymorphic long TC repeat microsatellite markers for genetic analysis of peanut

Selma E Macedo<sup>1,2</sup>, Márcio C Moretzsohn<sup>2</sup>, Soraya C M Leal-Bertioli<sup>2</sup>, Dione MT Alves<sup>1,2</sup>, Ediene G Gouvea<sup>1,2</sup>, Vânia CR Azevedo<sup>2</sup> and David J Bertioli<sup>1,3\*</sup>

## Abstract

**Background:** Peanut (*Arachis hypogaea* L.) is a crop of economic and social importance, mainly in tropical areas, and developing countries. Its molecular breeding has been hindered by a shortage of polymorphic genetic markers due to a very narrow genetic base. Microsatellites (SSRs) are markers of choice in peanut because they are co-dominant, highly transferrable between species and easily applicable in the allotetraploid genome. In spite of substantial effort over the last few years by a number of research groups, the number of SSRs that are polymorphic for *A. hypogaea* is still limiting for routine application, creating the demand for the discovery of more markers polymorphic within cultivated germplasm.

**Findings:** A plasmid genomic library enriched for TC/AG repeats was constructed and 1401 clones sequenced. From the sequences obtained 146 primer pairs flanking mostly TC microsatellites were developed. The average number of repeat motifs amplified was 23. These 146 markers were characterized on 22 genotypes of cultivated peanut. In total 78 of the markers were polymorphic within cultivated germplasm. Most of those 78 markers were highly informative with an average of 5.4 alleles per locus being amplified. Average gene diversity index (GD) was 0.6, and 66 markers showed a GD of more than 0.5. Genetic relationship analysis was performed and corroborated the current taxonomical classification of *A. hypogaea* subspecies and varieties.

**Conclusions:** The microsatellite markers described here are a useful resource for genetics and genomics in *Arachis*. In particular, the 66 markers that are highly polymorphic in cultivated peanut are a significant step towards routine genetic mapping and marker-assisted selection for the crop.

## Background

Peanut (*Arachis hypogaea* L.) is an oil crop of great importance in the tropics: in Africa, its production is comparable to all other grain legumes put together, and in Asia it provides about the same number of calories as soya (FAO, 2009). It has a narrow genetic base due to its recent origin event of tetraploidization [1,2], and this has hindered the application of molecular breeding in this crop.

Microsatellites or simple sequence repeats (SSRs) are useful molecular markers, are abundant, highly dispersed through the genomes of eukaryotes, and locus

specific. In addition they are the ideal markers for genotyping allotetraploid species, such as peanut, since they are usually co-dominant and multi-allelic. They are considered suitable as tools for genetic diversity studies, genetic linkage mapping, and for use in plant breeding programs [3].

Over the past years several research groups have put considerable effort into developing SSR markers for the genus *Arachis* in general and cultivated peanut in particular. Now about 5,000 SSR markers have been published [4-21]. These markers have been mainly used for diversity studies of germplasm, and for genetic mapping ([10,11,22-28]. However, in spite of the number of markers available, the very low polymorphism observed within cultivated germplasm requires large-scale marker screening for the identification of sufficient polymorphic

\* Correspondence: davidbertioli@unb.br

<sup>1</sup>Institute of Biological Sciences, Campus Darcy Ribeiro, University of Brasília, CEP 70.910-900 Brasília, DF, Brazil

Full list of author information is available at the end of the article

markers even for low density genetic maps in populations derived from cultivated × cultivated crosses. For example, in spite of extensive marker screening, the published SSR-based maps of cultivated peanut have only 131, 135 and 175 SSR markers [22,23,28]. In a previous study, we observed that AG/TC microsatellites were more polymorphic than AC/TG ones and that for cultivated germplasm, the highest polymorphism was observed for microsatellites with 21-25 motif repetitions [10]. In this context, we isolated and characterized long repeat AG/TC SSRs as an effort to develop markers with high polymorphism levels for cultivated peanut [10].

## Findings

### Sequencing

Sequences were obtained for 1401 cloned genomic fragments. Most fragments were sequenced in both forward and reverse orientations. Of these 1401 cloned fragments, 65 harbored sequences very similar to already published markers and so were excluded from further analysis ( $\geq 50\%$  of sequence with BLAST detected similarity with E-value  $\leq E-40$ ). Of the remaining sequences, 193 harbored microsatellite repeats. As expected, most were TC/AG repeats. The 143 unique SSR sequences were deposited in GenBank (accession numbers JN887491 to JN887636).

### Design of flanking primer pairs

Of the 193 selected sequences, 135 were appropriate for primer design. Some sequences contained multiple microsatellite repeats that could not be flanked by a single primer pair. Therefore, in total 146 primer pairs were designed. The microsatellites amplified were generally long, the average number of motif repeats being 23.

### Polymorphism levels

All 146 primer pairs amplified PCR products of the expected size. Of these, 85 were polymorphic within the tetraploid samples (including cultivated peanut, a synthetic allotetraploid and an accession of the tetraploid wild species, *A. monticola* (Table 1), and 78 were polymorphic within cultivated germplasm (Table 2).

The average number of alleles amplified per locus was 5.5, values of Gene Diversity (GD) were between 0.080 and 0.885, with an average of 0.614. Sixty-six markers were highly polymorphic with a GD of more than or equal to 0.5.

Within cultivated peanut, markers with 21-25 motif repetitions were the most polymorphic (69%), followed by markers that amplified more than 30 motif repetitions (60%, most of the markers being composite or imperfect) (Figure 1). The lowest polymorphism was observed with short microsatellites, between 6-10 motif repetitions.

### Genic content

Thirty-six of the 135 marker sequences encoded putative proteins that had significant BLAST similarities to known predicted proteins of *Arabidopsis* and/or legumes (E-value  $< 1e^{-07}$ , (Additional File 1: Table S1). Of the highly polymorphic markers (GD  $\geq 0.5$ ), 23% showed a significant BLAST similarity. This compares to 35% of the markers with GD  $< 0.5$  that do not show significant BLAST similarity.

### Genetic relationships

Genetic similarities were estimated by the band-sharing coefficient [29] in pairwise comparisons of the 24 genotypes (Table 1), using 78 microsatellite loci. Genetic similarity values ranged from 0.42-0.77, considering the 22 *A. hypogaea* genotypes used. Therefore all the genotypes were differentiated. A dendrogram based on UPGMA was constructed for the 24 genotypes (Figure 2). Cluster analysis showed two main groups according to the subspecies. Within these groups, genotypes of the same botanical varieties tended to group together.

### Discussion

In spite of the considerable effort made by several research groups to develop molecular markers for cultivated peanut, the number of polymorphic markers available for this important crop is still limiting. One of the main challenges in the construction of linkage maps using populations derived from cultivated × cultivated crosses is the need to screen thousands of markers to obtain sufficient markers even for the construction of low density maps.

In this study we focused on the class of microsatellites that was shown to be the most highly polymorphic for cultivated peanut in a previous study, long TC repeats [10]. For this, sequences were obtained from an enriched genomic library. For processing the sequences, the Staden software was used together with a module for the detection of microsatellites. Starting from a relatively large dataset of unassembled sequences, it was possible to quickly eliminate sequences that were similar to previously described markers, and assemble a compact database of microsatellite containing sequences. Using a naming convention of plasmid clones, it was possible to correctly assemble microsatellite-containing reads even when the only overlap between forward and reverse sequences were microsatellite repeats. This was particularly important for obtaining complete sequences when the repeats were long. For design of primer pairs, the program used took into account the quality values of consensus bases. This was reflected in the 100% success rate of amplification of the primer pairs.

Markers with 21-25 motif repetitions were the most polymorphic, while markers with shorter repeats tended

**Table 1** *Arachis* genotypes included in this study.

Genotype	Species/Subspecies/Variety	Origin
cv. BR 1	<i>A. hypogaea</i> subsp. <i>fastigiata</i> var. <i>fastigiata</i>	Embrapa Cotton, Brazil
cv. IAC-Caiapó	<i>A. hypogaea</i> subsp. <i>hypogaea</i> var. <i>hypogaea</i>	IAC, Sao Paulo, Brazil
cv. IAC Runner 886	<i>A. hypogaea</i> subsp. <i>hypogaea</i> var. <i>hypogaea</i>	IAC, Sao Paulo, Brazil
cv. IAC-Tatu	<i>A. hypogaea</i> subsp. <i>fastigiata</i> var. <i>fastigiata</i>	IAC, Sao Paulo, Brazil
cv. IAC-5024	<i>A. hypogaea</i> subsp. <i>hypogaea</i> var. <i>hypogaea</i>	IAC, Sao Paulo, Brazil
Mf210	<i>A. hypogaea</i> subsp. <i>fastigiata</i> var. <i>fastigiata</i>	Misiones, Argentina
Mf2352	<i>A. hypogaea</i> subsp. <i>fastigiata</i> var. <i>aequatoriana</i>	Pichincha, Ecuador
Mf2517	<i>A. hypogaea</i> subsp. <i>fastigiata</i> var. <i>peruviana</i>	Guayas, Ecuador
Mf2534	<i>A. hypogaea</i> subsp. <i>hypogaea</i> var. <i>hirsuta</i>	Pichincha, Ecuador
Mf2681	<i>A. hypogaea</i> subsp. <i>fastigiata</i> var. <i>vulgaris</i>	Georgia, USA
Mf3207	<i>A. hypogaea</i> subsp. <i>fastigiata</i> var. <i>vulgaris</i>	Asunción, Paraguay
Mf1625	<i>A. hypogaea</i> subsp. <i>fastigiata</i> var. <i>vulgaris</i>	Minas Gerais, Brazil
Mf3618	<i>A. hypogaea</i> subsp. <i>hypogaea</i> var. <i>hirsuta</i>	La Libertad, Peru
Mf2430	<i>A. hypogaea</i> subsp. <i>fastigiata</i> var. <i>peruviana</i>	Loja, Ecuador
Mf3764	<i>A. hypogaea</i> subsp. <i>fastigiata</i> var. <i>peruviana</i>	Loreto, Peru
Mf3892	<i>A. hypogaea</i> subsp. <i>fastigiata</i> var. <i>aequatoriana</i>	Lima, Peru
Mf3884	<i>A. hypogaea</i> subsp. <i>fastigiata</i> var. <i>aequatoriana</i>	San Martín, Peru
Mf3911	<i>A. hypogaea</i> subsp. <i>hypogaea</i> var. <i>hirsuta</i>	La Libertad, Peru
Mf574	<i>A. hypogaea</i> subsp. <i>hypogaea</i> var. <i>hypogaea</i>	Santa Cruz, Bolivia
Mf788	<i>A. hypogaea</i> subsp. <i>hypogaea</i> var. <i>hypogaea</i>	Tarija, Bolivia
Of106	<i>A. hypogaea</i> subsp. <i>hypogaea</i> type Xingu	Xingu Indigenous Park, Brazil
Of107	<i>A. hypogaea</i> subsp. <i>hypogaea</i> type Xingu	Xingu Indigenous Park, Brazil
V14165	<i>A. monticola</i>	Jujuy, Argentina
(K30076xV14167) <sup>4x</sup>	<i>A. ipaënsis</i> x <i>A. duranensis</i>	Embrapa Cenargen, Brazil

Genotypes of *Arachis hypogaea*, *A. monticola*, and a synthetic allotetraploid used for SSR marker validation and for genetic relationship analysis. *Arachis hypogaea* genotypes represent both subspecies (*hypogaea* and *fastigiata*) and the six botanical varieties (*hypogaea*, *hirsuta*, *fastigiata*, *vulgaris*, *aequatoriana*, and *peruviana*). (K30076xV14167)<sup>4x</sup> is a synthetic allotetraploid. IAC is Campinas Agronomic Institute

to be less polymorphic. This general tendency agrees with previous studies and reinforces the view that long (21-25 motif repetitions) or composite TC microsatellites are probably the most polymorphic marker class for cultivated peanut. A slightly higher proportion of markers that were not polymorphic or less informative (GD < 0.5) showed significant similarities to protein encoding regions, probably reflecting a tendency for non-coding regions to be more polymorphic than coding regions. Overall 78 of the markers were polymorphic for the cultivated accessions and 66 of these had GD value of 0.5 or above.

Cluster analysis showed two main groups separating the two subspecies of *A. hypogaea*. Some tendency of grouping of genotypes according to their botanical varieties was also evident. The main exceptions were three accessions, Mf2517, Mf2352, and Mf2534, which clustered with no apparent reason. The upper group contained the five *hypogaea/hypogaea* genotypes and two of the three *hypogaea/hirsuta* genotypes. *Arachis monticola* and the two genotypes collected in the Xingu

Indigenous Park also clustered in this group. The Xingu material has some morphological traits, especially in the pods, exceeding the previously variation described in cultivated peanut [30], but it seems to be closely related to *hypogaea/hypogaea* and *hypogaea/hirsuta* varieties. Our results also showed the great genetic similarity of the varieties *fastigiata* and *vulgaris*, which formed a subgroup, and *peruviana* and *aequatoriana*, which formed a separate subgroup. Some studies have shown that genotypes of the varieties *peruviana* and *aequatoriana* were more closely related to genotypes of the subspecies *hypogaea* than to the other two varieties (*fastigiata* and *vulgaris*) of subspecies *fastigiata* [8,17,31,32]. Our results, in contrast, corroborated the current taxonomical classification, despite the small number of genotypes included.

## Conclusion

In this study 146 new microsatellite markers were developed for *Arachis*. All of these markers are new and useful tools for genetics and genomics in *Arachis*, but in

**Table 2 List of the 78 polymorphic markers.**

Marker name	Major Allele Frequency	Allele number	Gene Diversity
TC13C03	0.4737	3	0.5873
TC13E05	0.4773	8	0.7118
TC14B08	0.5000	5	0.6621
TC14H09	0.9565	2	0.0832
TC15F12	0.3182	12	0.8388
TC16A10a	0.6786	6	0.5102
TC16A10b	0.3333	5	0.7222
TC19A02a	0.6667	2	0.4444
TC19A02b	0.5238	4	0.6270
TC19B07	0.2500	8	0.8472
TC19E01	0.6667	3	0.5000
TC20B05	0.4762	7	0.7086
TC20D05	0.4545	7	0.6374
TC20E08	0.4231	5	0.7278
TC21A09	0.5435	4	0.6011
TC21C03	0.5000	6	0.6791
TC21D06a	0.9286	2	0.1327
TC21D06b	0.3913	3	0.6578
TC21G01	0.2368	6	0.8075
TC22B07	0.9583	2	0.0799
TC22D09	0.8125	3	0.3116
TC22G05	0.4750	5	0.5700
TC22H12	0.5217	6	0.6522
TC23B10	0.4565	5	0.6408
TC23C08a	0.8158	3	0.3144
TC23C08b	0.9348	3	0.1238
TC23D04	0.3043	6	0.7741
TC23E04a	0.3750	6	0.7188
TC23E04b	0.5000	4	0.5564
TC23F04	0.8696	4	0.2382
TC23F09	0.5000	3	0.5450
TC23H10	0.2273	10	0.8636
TC24A06	0.3214	7	0.7985
TC24B05	0.2000	12	0.8850
TC24C06a	0.3182	10	0.8068
TC24D06b	0.6042	5	0.5460
TC24D12	0.5500	3	0.5950
TC24E01	0.9583	2	0.0799
TC24G10	0.5000	5	0.6796
TC25B04	0.4000	7	0.7025
TC25F03	0.5833	5	0.5747
TC25G11	0.3478	7	0.7561
TC27H12	0.6042	5	0.5868
TC28A12	0.2917	8	0.8090
TC28B01	0.2381	8	0.8345
TC28B07	0.4750	8	0.7213

**Table 2 List of the 78 polymorphic markers. (Continued)**

TC28E09	0.8261	2	0.2873
TC29C07b	0.3913	5	0.6909
TC29H08	0.5909	3	0.5165
TC30D04	0.5217	6	0.6682
TC31C09	0.5417	3	0.5799
TC31G11a	0.4000	8	0.7663
TC31G11b	0.3750	4	0.7049
TC31H02	0.3636	6	0.7479
TC31H03	0.6190	4	0.5488
TC31H06	0.4545	7	0.7293
TC34E12	0.4737	4	0.6482
TC35F05	0.3182	7	0.7934
TC36C02	0.5789	5	0.6039
TC36C03	0.2778	6	0.7778
TC38A07	0.5000	4	0.5663
TC38F01	0.4375	7	0.7144
TC38H09	0.2667	7	0.8267
TC39A10	0.4474	9	0.7382
TC39B04	0.5000	4	0.6400
TC39C01	0.5238	6	0.6712
TC39E08	0.3750	9	0.7986
TC39F01	0.2353	8	0.8443
TC39F08	0.4762	7	0.7007
TC40D04	0.4667	5	0.7022
TC40E08	0.9565	2	0.0832
TC41A05	0.4706	6	0.6990
TC41A10	0.5238	8	0.6689
TC41A11b	0.1875	10	0.8750
TC41C05	0.9583	2	0.0799
TC41C11	0.4773	6	0.6911
TC42A02	0.4583	3	0.6424
TC42A05	0.5000	7	0.6710
<b>Mean</b>	<b>0.5056</b>	<b>5.51</b>	<b>0.6144</b>

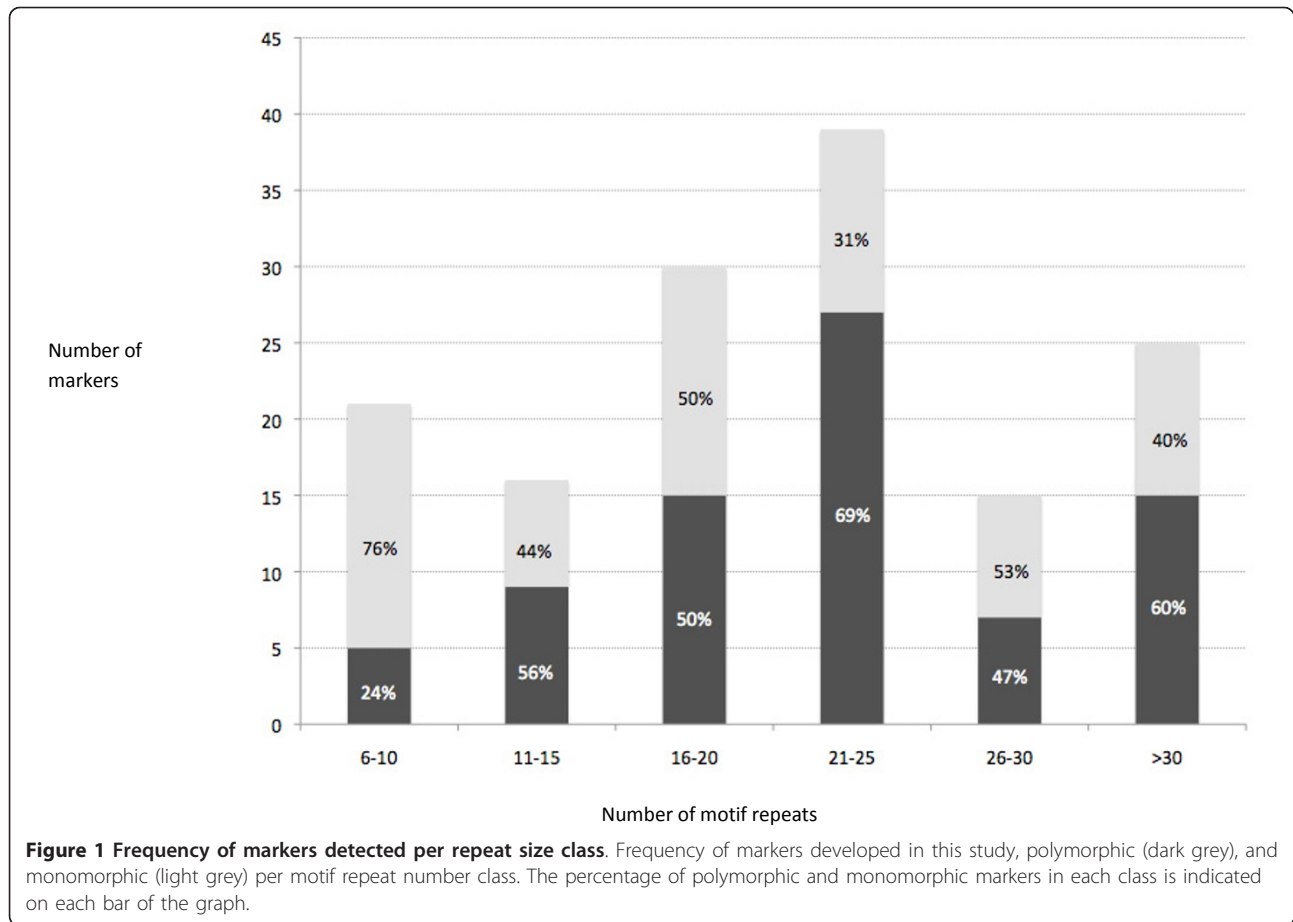
List of the 78 polymorphic markers as screened against 22 accessions of *A. hypogaea*. Major allele frequencies, allele number amplified per locus, and gene diversity indices are also shown

particular the set of 66 markers highly polymorphic for cultivated peanut are a significant step towards routine molecular breeding in this important crop.

## Methods

### Plant material and DNA extraction

For construction of an SSR-enriched genomic DNA library, the peanut genotype *A. hypogaea* subsp. *fastigiata* var. *fastigiata* cv. IAC-Tatu was used. For marker validation and genetic relationship analysis, the following panel was used: a set of 22 *A. hypogaea* genotypes representing all six botanical varieties, a synthetic



allotetraploid (derived from a cross between *A. ipaënsis* and *A. duranensis*) and an accession of the tetraploid wild species, *A. monticola* (Table 1). Marker polymorphism was also assessed in parents of four mapping populations: *A. duranensis* K7988 × *A. stenosperma* V10309 [10,25], *A. ipaënsis* KG30076 × *A. magna* KG30097 [11], *A. hypogaea* subsp. *hypogaea* var. *hypogaea* cv. Runner IAC 886, and *A. hypogaea* subsp. *fastigiata* var. *vulgaris* cv. Fleur 11 × a synthetic amphidiploid [24] (Additional file 1).

Total genomic DNA was isolated from young leaves using the CTAB-based protocol described by Grattapaglia and Sederoff [33] modified by the inclusion of an additional precipitation step with 1.2 M NaCl. DNA quality and concentration were estimated on agarose gel electrophoresis and by spectrophotometry (Genesys 4 - Spectronic, Unitech, USA).

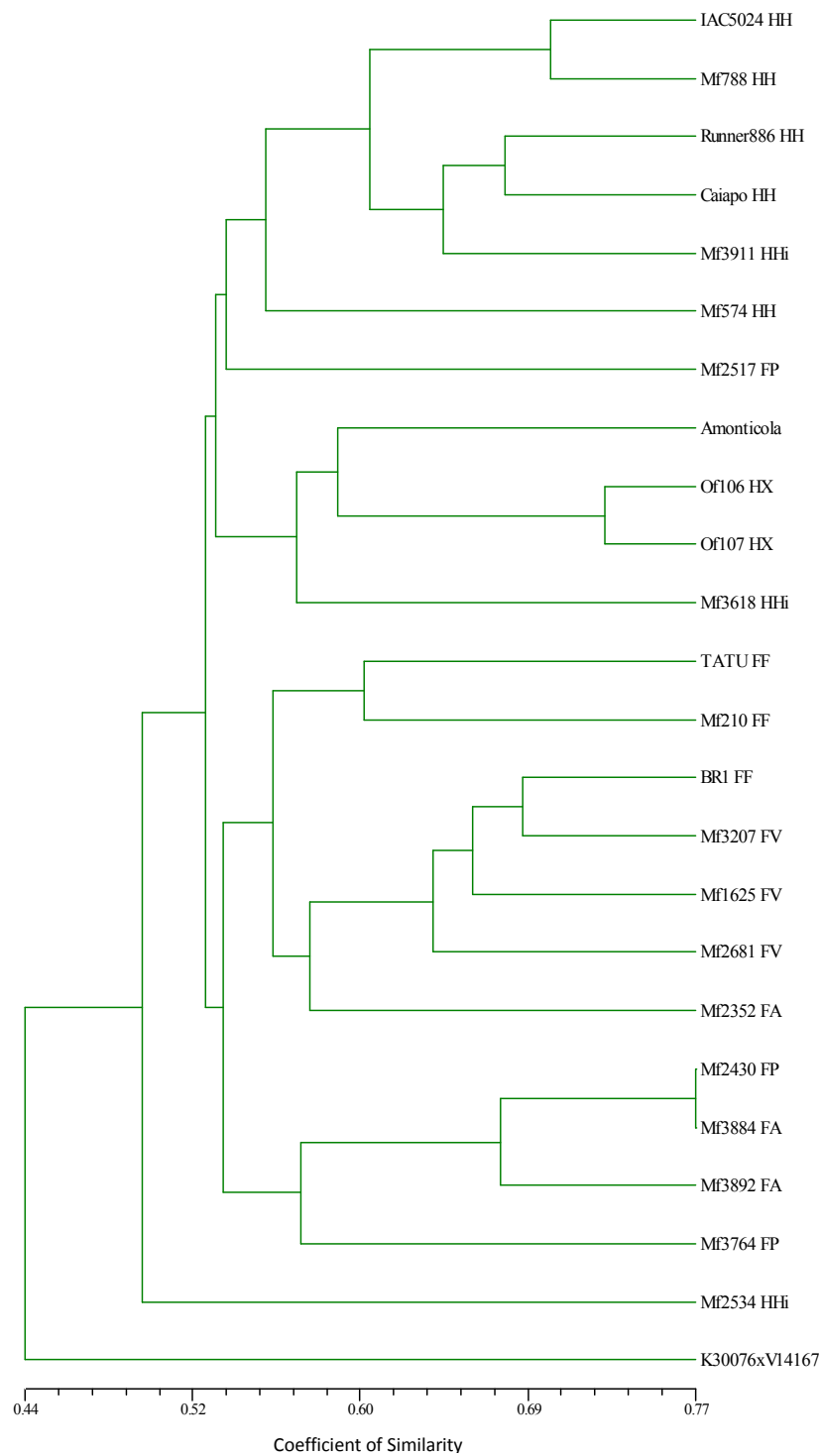
#### Construction of SSR-enriched library

A genomic DNA library enriched for the dinucleotide repeats TC/AG was constructed as described by Moretzsohn [10]. About nine micrograms of DNA were digested with *Sau3AI* (Amersham Biosciences, UK) and

electrophoresed in 0.8% low melting agarose gels to select fragments ranging from 200-600 bp. The selected fragments were purified from the agarose gels using phenol/chloroform, and ligated into *Sau3AI* specific adaptors (5'-cagcctagagccgaattcacc-3' and 5'-gatcggg-gaaatcggtcaggctg-3'). The ligated fragments were hybridized to biotinylated (AG)<sub>15</sub> oligonucleotides and isolated using streptavidin-coated magnetic beads (Dynabeads Streptavidin, Dynal Biotech, Norway). The eluted fragments were amplified using one adaptor-specific primer, cloned into the pGEM-T Easy vector (Promega, WI, USA) and transformed into XL1-Blue *E. coli* cells with blue/white selection (Invitrogen, CA, USA). Plasmid DNAs of the positive clones were isolated by the alkaline lysis method. Sequencing reactions were performed with T7 and SP6 primers and the Big-Dye Terminator Cycle Sequencing Kit, version 3.1 (Applied Biosystems, CA, USA) using the ABI Prism 377 automated DNA sequencer.

#### SSR marker development and validation

Sequences were processed and assembled by using the Staden package [34] with the repeat sequence finding



**Figure 2 Dendrogram based on the band-sharing distances of 24 *Arachis* genotypes, generated by UPGMA.** The letters, after each *A. hypogaea* accession number, refer to the subspecies, varieties, and type: FF-*fastigiata/fastigiata*; FV-*fastigiata/vulgaris*; FA-*fastigiata/aequatoriana*; FP-*fastigiata/peruviana*; HH-*hypogaea/hypogaea*; HHi-*hypogaea/hirsuta*; and HX-*hypogaea* Xingu type; an accession of *A. monticola* and a synthetic allotetraploid plant (K30076 × V14167)<sup>4x</sup>. Note, all accessions were distinguished, the highest point represented on the scale of similarity coefficient being 0.77.

module TROLL [35] and Primer3 for primer design [36], using a module developed by Martins et al. [37]. Sequences with more than ten motif repeats were chosen for primer design. Some sequences with BLASTX hits to genes of interest were also included in spite of having fewer than ten motif repeats. The parameters for primer design were: (1) primer size ranging from 18 bp to 25 bp with an optimal length of 20 bp; (2) primer *T<sub>m</sub>* (melting temperature) ranging from 57°C to 63°C with an optimal temperature of 60°C; and (3) GC content ranging from 40%-60%. Default values were used for the other parameters.

PCR reactions contained 10 ng of genomic DNA, 1 U of *Taq* DNA polymerase (Amersham Biosciences, UK), 1× PCR buffer (200 mM Tris pH 8.4, 500 mM KCl), 1.5-2.0 mM MgCl<sub>2</sub>, 200 μM of each dNTP, and 0.4 μM of each primer, in a final reaction volume of 10 μl. Amplifications were carried out in a PTC 100 thermocycler (MJ Research Inc., MA, USA). PCR conditions were: 96°C for 5 min, followed by 30 cycles of 94°C for 1 min, 48-62°C (annealing temperature depending on primer pair, see Additional file 1).

Total genomic DNA was isolated from young leaves using the CTAB-based protocol described by Grattapaglia and Sederoff [33] modified by the inclusion of an additional precipitation step with 1.2 M NaCl. DNA quality and concentration were estimated on agarose gel electrophoresis and by spectrophotometry (Genesys 4 - Spectronic, Unitech, USA).

#### Construction of SSR-enriched library

A genomic DNA library enriched for the dinucleotide repeats TC/AG was constructed as described by Moretzsohn [10]. About nine micrograms of DNA were digested with *Sau*3AI (Amersham Biosciences, UK) and electrophoresed in 0.8% low melting agarose gels to select fragments ranging from 200-600 bp. The selected fragments were purified from the agarose gels using phenol/chloroform, and ligated into *Sau*3AI specific adaptors (5'-cagcctagagccgaattcacc-3' and 5'-gatcggtgaaatcggtcaggctg-3'). The ligated fragments were hybridized to biotinylated (AG)<sub>15</sub> oligonucleotides and isolated using streptavidin-coated magnetic beads (Dynabeads Streptavidin, Dynal Biotech, Norway). The eluted fragments were amplified using one adaptor-specific primer, cloned into the pGEM-T Easy vector (Promega, WI, USA) and transformed into XL1-Blue *E. coli* cells with blue/white selection (Invitrogen, CA, USA). Plasmid DNAs of the positive clones were isolated by the alkaline lysis method. Sequencing reactions were performed with T7 and SP6 primers and the Big-Dye Terminator Cycle Sequencing Kit, version 3.1 (Applied Biosystems, CA, USA) using the ABI Prism 377 automated DNA sequencer.

#### SSR marker development and validation

Sequences were processed and assembled by using the Staden package [34] with the repeat sequence finding module TROLL [35] and Primer3 for primer design [36], using a module developed by Martins et al. [37]. Sequences with more than ten motif repeats were chosen for primer design. Some sequences with BLASTX hits to genes of interest were also included in spite of having fewer than ten motif repeats. The parameters for primer design were: (1) primer size ranging from 18 bp to 25 bp with an optimal length of 20 bp; (2) primer *T<sub>m</sub>* (melting temperature) ranging from 57°C to 63°C with an optimal temperature of 60°C; and (3) GC content ranging from 40%-60%. Default values were used for the other parameters.

PCR reactions contained 10 ng of genomic DNA, 1 U of *Taq* DNA polymerase (Amersham Biosciences, UK), 1× PCR buffer (200 mM Tris pH 8.4, 500 mM KCl), 1.5-2.0 mM MgCl<sub>2</sub>, 200 μM of each dNTP, and 0.4 μM of each primer, in a final reaction volume of 10 μl. Amplifications were carried out in a PTC 100 thermocycler (MJ Research Inc., MA, USA). PCR conditions were: 96°C for 5 min, followed by 30 cycles of 94°C for 1 min, 48-62°C (annealing temperature depending on primer pair, see Additional file 1).

Total genomic DNA was isolated from young leaves using the CTAB-based protocol described by Grattapaglia and Sederoff [33] modified by the inclusion of an additional precipitation step with 1.2 M NaCl. DNA quality and concentration were estimated on agarose gel electrophoresis and by spectrophotometry (Genesys 4 - Spectronic, Unitech, USA).

#### Construction of SSR-enriched library

A genomic DNA library enriched for the dinucleotide repeats TC/AG was constructed as described by Moretzsohn [10]. About nine micrograms of DNA were digested with *Sau*3AI (Amersham Biosciences, UK) and electrophoresed in 0.8% low melting agarose gels to select fragments ranging from 200-600 bp. The selected fragments were purified from the agarose gels using phenol/chloroform, and ligated into *Sau*3AI specific adaptors (5'-cagcctagagccgaattcacc-3' and 5'-gatcggtgaaatcggtcaggctg-3'). The ligated fragments were hybridized to biotinylated (AG)<sub>15</sub> oligonucleotides and isolated using streptavidin-coated magnetic beads (Dynabeads Streptavidin, Dynal Biotech, Norway). The eluted fragments were amplified using one adaptor-specific primer, cloned into the pGEM-T Easy vector (Promega, WI, USA) and transformed into XL1-Blue *E. coli* cells with blue/white selection (Invitrogen, CA, USA). Plasmid DNAs of the positive clones were isolated by the alkaline lysis method. Sequencing reactions were performed with T7 and SP6 primers and the Big-Dye

Terminator Cycle Sequencing Kit, version 3.1 (Applied Biosystems, CA, USA) using the ABI Prism 377 automated DNA sequencer.

#### SSR marker development and validation

Sequences were processed and assembled by using the Staden package [34] with the repeat sequence finding module TROLL [35] and Primer3 for primer design [36], using a module developed by Martins et al. [37]. Sequences with more than ten motif repeats were chosen for primer design. Some sequences with BLASTX hits to genes of interest were also included in spite of having fewer than ten motif repeats. The parameters for primer design were: (1) primer size ranging from 18 bp to 25 bp with an optimal length of 20 bp; (2) primer *Tm* (melting temperature) ranging from 57°C to 63°C with an optimal temperature of 60°C; and (3) GC content ranging from 40%-60%. Default values were used for the other parameters.

PCR reactions contained 10 ng of genomic DNA, 1 U of *Taq* DNA polymerase (Amersham Biosciences, UK), 1× PCR buffer (200 mM Tris pH 8.4, 500 mM KCl), 1.5-2.0 mM MgCl<sub>2</sub>, 200 μM of each dNTP, and 0.4 μM of each primer, in a final reaction volume of 10 μl. Amplifications were carried out in a PTC 100 thermocycler (MJ Research Inc., MA, USA). PCR conditions were: 96°C for 5 min, followed by 30 cycles of 94°C for 1 min, 48-62°C (annealing temperature depending on primer pair, see Additional file 1).

Total genomic DNA was isolated from young leaves using the CTAB-based protocol described by Grattapaglia and Sederoff [33] modified by the inclusion of an additional precipitation step with 1.2 M NaCl. DNA quality and concentration were estimated on agarose gel electrophoresis and by spectrophotometry (Genesys 4 - Spectronic, Unitech, USA).

#### Construction of SSR-enriched library

A genomic DNA library enriched for the dinucleotide repeats TC/AG was constructed as described by Moretzsohn [10]. About nine micrograms of DNA were digested with *Sau*3AI (Amersham Biosciences, UK) and electrophoresed in 0.8% low melting agarose gels to select fragments ranging from 200-600 bp. The selected fragments were purified from the agarose gels using phenol/chloroform, and ligated into *Sau*3AI specific adaptors (5'-cagcctagagccgaattcacc-3' and 5'-gatcgtgaaatcggctcaggctg-3'). The ligated fragments were hybridized to biotinylated (AG)<sub>15</sub> oligonucleotides and isolated using streptavidin-coated magnetic beads (Dynabeads Streptavidin, Dynal Biotech, Norway). The eluted fragments were amplified using one adaptor-

specific primer, cloned into the pGEM-T Easy vector (Promega, WI, USA) and transformed into XL1-Blue *E. coli* cells with blue/white selection (Invitrogen, CA, USA). Plasmid DNAs of the positive clones were isolated by the alkaline lysis method. Sequencing reactions were performed with T7 and SP6 primers and the Big-Dye Terminator Cycle Sequencing Kit, version 3.1 (Applied Biosystems, CA, USA) using the ABI Prism 377 automated DNA sequencer.

#### SSR marker development and validation

Sequences were processed and assembled by using the Staden package [34] with the repeat sequence finding module TROLL [35] and Primer3 for primer design [36], using a module developed by Martins et al. [37]. Sequences with more than ten motif repeats were chosen for primer design. Some sequences with BLASTX hits to genes of interest were also included in spite of having fewer than ten motif repeats. The parameters for primer design were: (1) primer size ranging from 18 bp to 25 bp with an optimal length of 20 bp; (2) primer *Tm* (melting temperature) ranging from 57°C to 63°C with an optimal temperature of 60°C; and (3) GC content ranging from 40%-60%. Default values were used for the other parameters.

PCR reactions contained 10 ng of genomic DNA, 1 U of *Taq* DNA polymerase (Amersham Biosciences, UK), 1× PCR buffer (200 mM Tris pH 8.4, 500 mM KCl), 1.5-2.0 mM MgCl<sub>2</sub>, 200 μM of each dNTP, and 0.4 μM of each primer, in a final reaction volume of 10 μl. Amplifications were carried out in a PTC 100 thermocycler (MJ Research Inc., MA, USA). PCR conditions were: 96°C for 5 min, followed by 30 cycles of 94°C for 1 min, 48-62°C (annealing temperature depending on primer pair, see Additional file 1) for 1 min, 72°C for 1 min, with a final extension for 10 min at 72°C. PCR products were separated by electrophoresis on denaturing polyacrylamide gels (6% acrylamide:bisacrylamide 29:1, 5 M urea in TBE pH 8.3), stained with silver nitrate [38].

#### Data analyses

Number of alleles per locus, the range of fragment length and gene diversity (GD) were estimated for the polymorphic primers, using the program "Power Marker 3.25" [39]. Pairwise genetic similarities were estimated from the allelic data using the band-sharing coefficient of Lynch [29]. The resulting diagonal matrix was then submitted to cluster analysis using UPGMA ("unweighted pair-group method analysis"). In order to verify the consistency of the built dendrogram, the cophenetic correlation - *r* [40] was calculated. All these analyses were performed using the software NTSYS 2.21 [41].



## Additional material

**Additional file 1: Table S1. Marker homologies and information.** The file provides information on all markers used in this work: marker name, primer sequence, SSR motif, GenBank number, PCR conditions, fragment length, sequence homologies and if the primers are polymorphic (P) or monomorphic (M) for parents of four mapping populations.

## Acknowledgements

The authors would like to acknowledge CNPq for a Research fellowship for DB, and Student fellowships for DMTA and EGG, Generation Challenge Programme project TL1 and host institutions. We also acknowledge GS, IG and JV for providing the accessions included.

## Author details

<sup>1</sup>Institute of Biological Sciences, Campus Darcy Ribeiro, University of Brasília, CEP 70.910-900 Brasília, DF, Brazil. <sup>2</sup>Embrapa Genetic Resources and Biotechnology, PqEB W5 Norte Final, CP 02372, CEP 70.770-900 Brasília, DF, Brazil. <sup>3</sup>Biotechnology and Genomic Sciences, Catholic University of Brasília, SGAN 916 Avenida W5, CEP 70.790-160 Brasília, DF, Brazil.

## Authors' contributions

SEM participated in the experimental work, the identification of SSRs, primer design, and marker screening. EGG and DMTA participated in marker screening. DJB and MCM participated in the design and implementation of the study, supervision of the work and processing interpretation of the results. SCML-B participated in data analysis, microsatellite marker validation and drafted the manuscript. VCRA participated in the construction of SSR-enriched library. All authors read and approved the final manuscript.

## Competing interests

The authors declare that they have no competing interests.

Received: 25 October 2011 Accepted: 3 February 2012

Published: 3 February 2012

## References

- Halward TM, Stalker HT, Larue EA, Kochert G: Genetic variation detectable with molecular markers among unadapted germ-plasm resources of cultivated peanut and related wild species. *Genome* 1991, **34**:1013-1020.
- Kochert G, Halward T, Branch WD, Simpson CE: RFLP variability in peanut (*Arachis hypogaea* L.) cultivars and wild species. *Theor Appl Genet* 1991, **81**(5):565-570.
- Collard B, Jahufer M, Brouwer J, Pang E: An introduction to markers, quantitative trait loci (QTL) mapping and marker-assisted selection for crop improvement: The basic concepts. *Euphytica* 2005, **142**(1):169-196.
- He G, Meng R, Gao H, Guo B, Newman M, Pittman RN, Prakash CS: Simple sequence repeat markers for botanical varieties of cultivated peanut (*Arachis hypogaea* L.). *Euphytica* 2005, **142**:131-136.
- Wei X, Liu L, Cui S, Chen H, Zhang J: Development of EST-SSR markers in peanut (*Arachis hypogaea* L.). *Frontiers of Agriculture in China* 2011, **5**(3):268-273.
- Hopkins M, Casa A, Wang T, Mitchell S, Dean R, Kochert G, Kresovich S: Discovery and characterization of polymorphic simple sequence repeats (SSRS) in peanut. *Crop Science* 1999, **39**:1243-1247.
- He G, Meng R, Newman M, Gao G, Pittman RN, Prakash CS: Microsatellites as DNA markers in cultivated peanut (*Arachis hypogaea* L.). *BMC Plant Biol* 2003, **3**:3.
- Ferguson ME, Burrow MD, Schulze SR, Bramel PJ, Paterson AH, Kresovich S, Mitchell S: Microsatellite identification and characterization in peanut (*Arachis hypogaea* L.). *Theor Appl Genet* 2004, **108**:1064-1070.
- Moretzsohn MC, Hopkins MS, Mitchell SE, Kresovich S, Valls JFM, Ferreira ME: Genetic diversity of peanut (*Arachis hypogaea* L.) and its wild relatives based on the analysis of hypervariable regions of the genome. *BMC Plant Biol* 2004, **4**:11.
- Moretzsohn M, Leoi L, Proite K, Guimarães P, Leal-Bertioli S, Gimenes M, Martins W, Valls J, Grattapaglia D, Bertioli D: A microsatellite-based, gene-rich linkage map for the AA genome of *Arachis* (Fabaceae). *Theor Appl Genet* 2005, **111**(6):1060-1071.
- Moretzsohn MC, Barbosa AVG, Alves-Freitas DMT, Teixeira C, Leal-Bertioli SCM, Guimarães PM, Pereira RW, Lopes CR, Cavallari MM, Valls JFM, et al: A linkage map for the B-genome of *Arachis* (Fabaceae) and its synteny to the A-genome. *BMC Plant Biol* 2009, **9**:40.
- Gimenes M, Hoshino A, Barbosa A, Palmieri D, Lopes C: Characterization and transferability of microsatellite markers of the cultivated peanut (*Arachis hypogaea*). *BMC Plant Biology* 2007, **7**(9), doi:10.1186/1471-2229-7-9.
- Bravo JP, Hoshino AA, Angelici C, Lopes CR, Gimenes MA: Transferability and use of microsatellite markers for the genetic analysis of the germplasm of some *Arachis* section species of the genus *Arachis*. *Genetics and Molecular Biology* 2006, **29**(3):516-524.
- Proite K, Leal-Bertioli S, Bertioli D, Moretzsohn M, da Silva F, Martins N, Guimarães P: ESTs from a wild *Arachis* species for gene discovery and marker development. *BMC Plant Biol* 2007, **7**(1):7.
- Methylation-filtered and shotgun genomic sequences for diploid and tetraploid peanut taxa. [http://www.ncbi.nlm.nih.gov/].
- Wang CT, Yang XD, Chen D, Lin Yu SX, Liu GZ, Tang YY, Xu JZ: Isolation of simple sequence repeats from groundnut. *Electronic Journal of Biotechnology* 2007, **10**:473-480.
- Cuc LM, Mace ES, Crouch JH, Quang VD, Long TD, Varshney RK: Isolation and characterization of novel microsatellite markers and their application for diversity assessment in cultivated groundnut (*Arachis hypogaea* L.). *BMC Plant Biol* 2008, **8**:55.
- Liang X, Chen X, Hong Y, Liu H, Zhou G, Li S, Guo B: Utility of EST-derived SSR in cultivated peanut (*Arachis hypogaea* L.) and *Arachis* wild species. *BMC Plant Biol* 2009, **9**(1):35.
- Song GQ, Li MJ, Xiao H, Wang XJ, Tang RH, Xia H, Zhao CZ, Bi YP: EST sequencing and SSR marker development from cultivated peanut (*Arachis hypogaea* L.). *Electronic Journal of Biotechnology* 2010, **13**:7-8.
- Yuan M, Gong L, Meng R, Li S, Dang P, Guo B, He G: Development of trinucleotide (GGC)<sub>n</sub> SSR markers in peanut (*Arachis hypogaea* L.). *Electronic Journal of Biotechnology* 2010, **13**:5-6.
- Koilkonda P, Sato S, Tabata S, Shirasawa K, Hirakawa H, Sakai H, Sasamoto S, Watanabe A, Wada T, Kishida Y, et al: Large-scale development of expressed sequence tag-derived simple sequence repeat markers and diversity analysis in *Arachis* spp. *Molecular Breeding* 2011, online first doi:10.1007/s11032-011-9604-8.
- Hong YB, Chen XP, Liang XQ, Liu HY, Zhou GY, Li SX, Wen SJ, Holbrook CC, Guo BZ: A SSR-based composite genetic linkage map for the cultivated peanut (*Arachis hypogaea* L.) genome. *BMC Plant Biol* 2010, **10**:1-13.
- Hong YB, Liang XQ, Chen XP, Liu HY, Zhou GY, Li SX, Wen SJ: Construction of Genetic Linkage Map Based on SSR Markers in Peanut (*Arachis hypogaea* L.). *Agricultural Sciences in China* 2008, **7**(8):915-921.
- Foncéca D, Hodo-Abalo T, Rivallan R, Faye I, Sall M, Ndoye O, Favero A, Bertioli DJ, Glaszmann J-C, Courtois B, et al: Genetic mapping of wild introgressions into cultivated peanut: a way toward enlarging the genetic basis of a recent allotetraploid. *BMC Plant Biol* 2009, **9**(1):103.
- Leal-Bertioli SCM, Jose ACVF, Alves-Freitas DMT, Moretzsohn MC, Guimarães PM, Nielsen S, Vidigal BS, Pereira RW, Pike J, Favero AP, et al: Identification of candidate genome regions controlling disease resistance in *Arachis*. *BMC Plant Biol* 2009, **9**(1):112.
- Varshney RK, Mahendar T, Aruna R, Nigam SN, Neelima K, Vadez V, Hoisington DA: High level of natural variation in a groundnut (*Arachis hypogaea* L.) germplasm collection assayed by selected informative SSR markers. *Plant Breeding* 2009, **128**(5):486-494.
- Sarvamangala C, Gowda MVC, Varshney RK: Identification of quantitative trait loci for protein content, oil content and oil quality for groundnut (*Arachis hypogaea* L.). *Field Crop Res* 2011, **122**(1):49-59.
- Varshney RK, Bertioli DJ, Moretzsohn MC, Vadez V, Krishnamurthy L, Aruna R, Nigam SN, Ravi K, He G, Knapp SJ, et al: The first SSR based genetic linkage map for cultivated groundnut (*Arachis hypogaea* L.). *Theor Appl Genet* 2009, **118**:729-739.
- Lynch M: The Similarity Index and DNA Fingerprinting. *Mol Biol Evol* 1990, **7**:478-484.
- Freitas F, Moretzsohn M, Valls J: Genetic variability of Brazilian Indian landraces of *Arachis hypogaea* L. *Genet Mol Res* 2007, **6**:675-684.
- He G, Prakash C: Evaluation of genetic relationships among botanical varieties of cultivated peanut (*Arachis hypogaea* L.) using AFLP markers. *Genetic Resources and Crop Evolution* 2007, **48**:347-353.

32. Raina SN, Rani V, Kojima T, Ogihara Y, Singh KP, Devarumath RM: **RAPD and ISSR fingerprints as useful genetic markers for analysis of genetic diversity, varietal identification, and phylogenetic relationships in peanut (*Arachis hypogaea*) cultivars and wild species.** *Genome* 2001, **44**:763-772.
33. Grattapaglia D, Sederoff R: **Genetic linkage maps of *Eucalyptus grandis* and *Eucalyptus urophylla* using a pseudo-testcross: mapping strategy and RAPD markers.** *Genetics* 1994, **137**:1121-1137.
34. Staden R: **The Staden sequence analysis package.** *Mol Biotechnol* 1996, **5**(3):233-241.
35. Castelo AT, Martins W, Gao GR: **TROLL - Tandem Repeat Occurrence Locator.** *Bioinformatics* 2002, **18**(4):634-636.
36. Rozen S, Skaletsky H: **Primer3 on the WWW for General Users and for Biologist Programmers.** *Bioinformatics Methods and Protocols: Methods in Molecular Biology* 2000, **132**(3):365-386.
37. Martins W, de Sousa D, Proite K, Guimaraes P, Moretzsohn M, Bertoli D: **New softwares for automated microsatellite marker development.** *Nucleic Acids Res* 2006, **34**(4):e31.
38. Creste S, Yulmann-Neto A, Figueira A: **Detection of Single Sequence Repeat polymorphisms in denaturing polyacrylamide sequencing gels by silver staining.** *Plant Molecular Biology Reporter* 2001, **19**:299-306.
39. Liu K, Muse S: **PowerMarker: an integrated analysis environment for genetic marker analysis.** *Bioinformatics* 2005, **21**(9):2128-2129.
40. Mantel N: **The detection of disease clustering and a generalized regression approach.** *Cancer Res* 1967, **27**:209-220.
41. **NTSYSpc: numerical taxonomy system. ver. 2.21.** [<http://www.exetersoftware.com/cat/ntsyspc/ntsyspc.html>].

doi:10.1186/1756-0500-5-86

**Cite this article as:** Macedo et al.: Development and characterization of highly polymorphic long TC repeat microsatellite markers for genetic analysis of peanut. *BMC Research Notes* 2012 **5**:86.

**Submit your next manuscript to BioMed Central  
and take full advantage of:**

- Convenient online submission
- Thorough peer review
- No space constraints or color figure charges
- Immediate publication on acceptance
- Inclusion in PubMed, CAS, Scopus and Google Scholar
- Research which is freely available for redistribution

Submit your manuscript at  
[www.biomedcentral.com/submit](http://www.biomedcentral.com/submit)

